

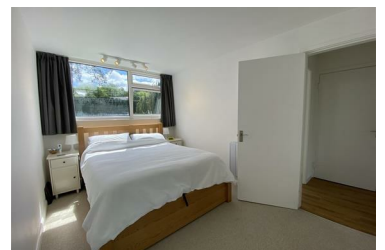


6 Howcroft Court Eastmead Lane, Bristol, BS9 1HJ

£1,400 PCM



\*\*\* NEWLY REFERBISHED TWO BED APARTMENT WITH LOVELY COMMUNAL GARDENS \*\*\*



- NEWLY REFURBISHED
- GARAGE
- HIGH SPEC BATHROOM
- POSSIBILITY OF PART FURNISHED
- AVAILABLE END OF JULY 2024
- IDEAL FOR A COUPLE
- COMMUNAL GARDENS
- PEACEFUL LOCATION
- PARKING AVAILABLE (ALSO PLENTY OF STREET PARKING)