



Brockley Rise, SE23

£800,000

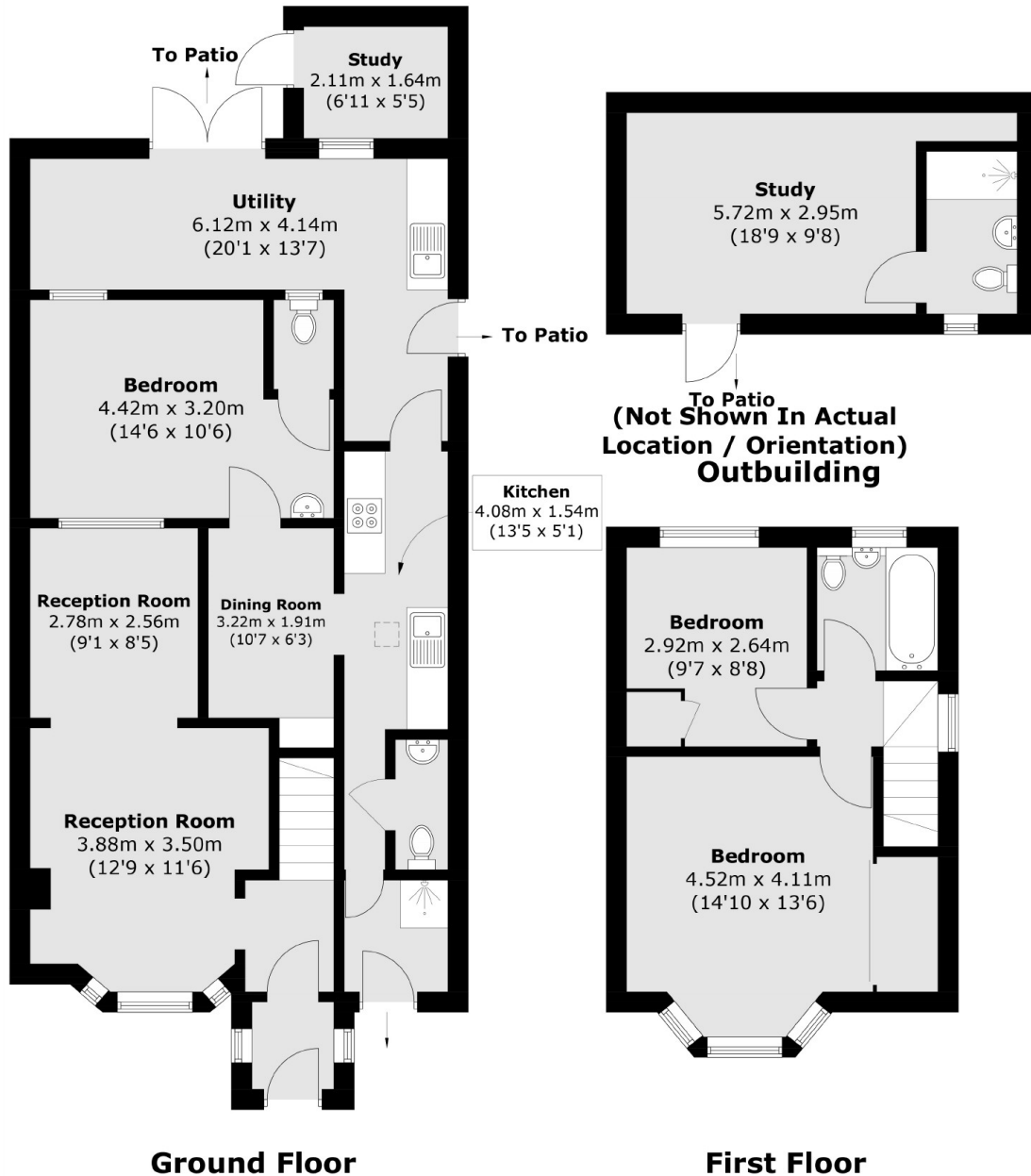
A three bedroom, three bathroom end of terrace family home ideally placed for Honor Oak Park or Crofton Park stations as well as several good primary schools.

Honor Oak Park station provides fast and frequent services to London Bridge as well as Overground services northwards to Shoreditch and Highbury and Islington. Close to the local pubs, restaurants and schools

Features

End of Terrace
Three Bedrooms
Three Bathrooms
Private Garden
Studio In Garden
Close To Station

Brockley Rise, London, SE23



Total area (approx.): 107.5 sq. m (1,157.1 sq. ft)
Outbuilding: 20.6 sq. m (221.7 sq. ft)