



Whatman Road, SE23

£800,000

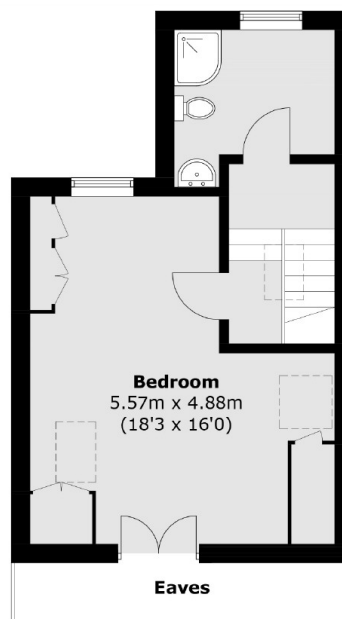
In need of some modernisation, this four bedroom, two bathroom period house located in the heart of Honor Oak Park and boasting a large open plan kitchen with doors leading to a south-facing garden is offered chain free.

Whatman Road is a short walk away from Honor Oak Park station where there are services into London Bridge as well as Overground services northwards to Shoreditch and Highbury and Islington, and southwards to Croydon. The nearest primary school is the highly-rated Dalmain. The area is dotted with green spaces including One Tree Hill and Blythe Hill Fields at the top of which are panoramic views of the London skyline.

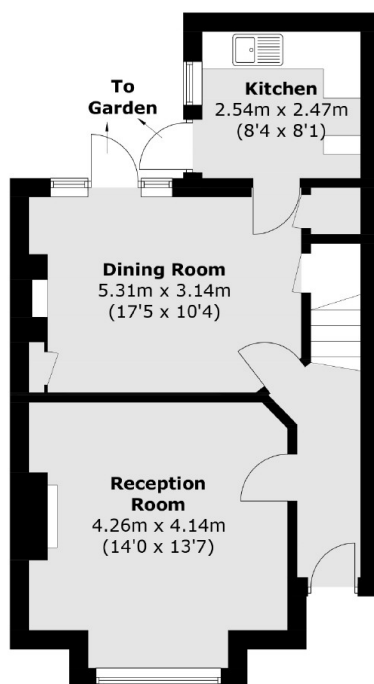
Features

- Four Bedrooms
- Period Property
- Needs Modernisation
- South Facing Garden
- Close To Station
- Chain Free

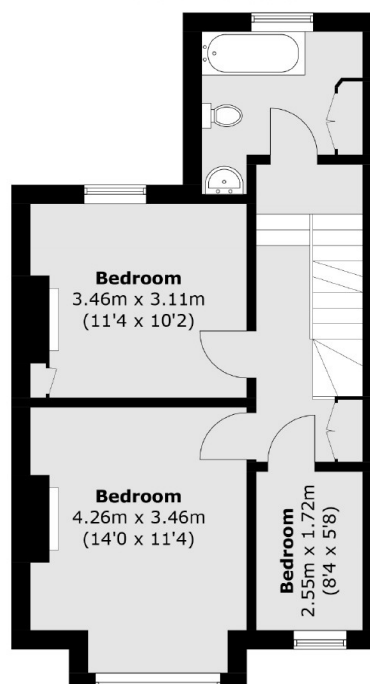
Whatman Road,
London, SE23



Second Floor



Ground Floor



First Floor

Total area (approx.): 123.6 sq. m (1,330.4 sq. ft)
(Excluding Eaves)

Dexters

Honor Oak
61 Honor Oak Park
London
SE23 1EA
Sales
020 8291 9556

Energy Rating: D. We aim to make our particulars both accurate and reliable. However they are not guaranteed; nor do they form part of an offer or contract. If you require clarification on any points then please contact us, especially if you're traveling some distance to view. Please note that appliances and heating systems have not been tested and therefore no warranties can be given as to their good working order.

 **RICS** | Regulated
Estate Agent
and Letting Agent

dexters.co.uk