



## Perry Rise, SE23

£575,000

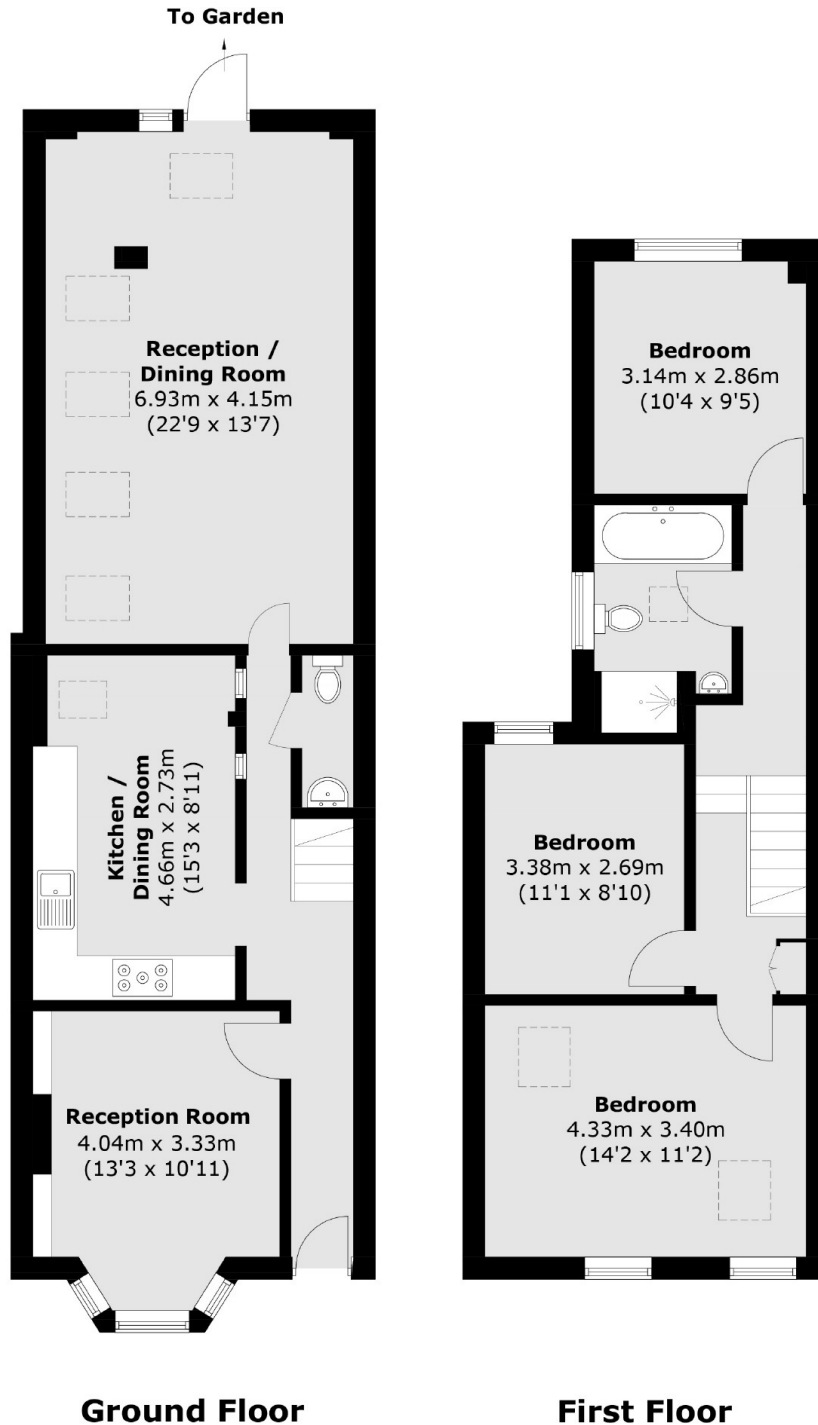
This well-presented, three bedroom, Victorian house offers a bay fronted reception room plus a further spacious reception room with doors leading to the rear south east facing garden, a downstairs WC and a modern fitted kitchen. Upstairs, there are three double bedrooms and a family bathroom.

Perry Rise is close to a choice of stations: Lower Sydenham, Sydenham and Forest Hill allowing quick and easy access into central London as well as London Overground services. The property is well located for the local schools, shops and Mayow Park.

### Features

- Three Double Bedrooms
- Two Reception Rooms
- Victorian Terrace
- South East Facing Garden
- Potential to Extend STPP
- Good Location

# Perry Rise, London, SE23



Total area (approx.): 114.4 sq. m (1,231.4 sq. ft)