



Lowther Hill, SE23

£240,000

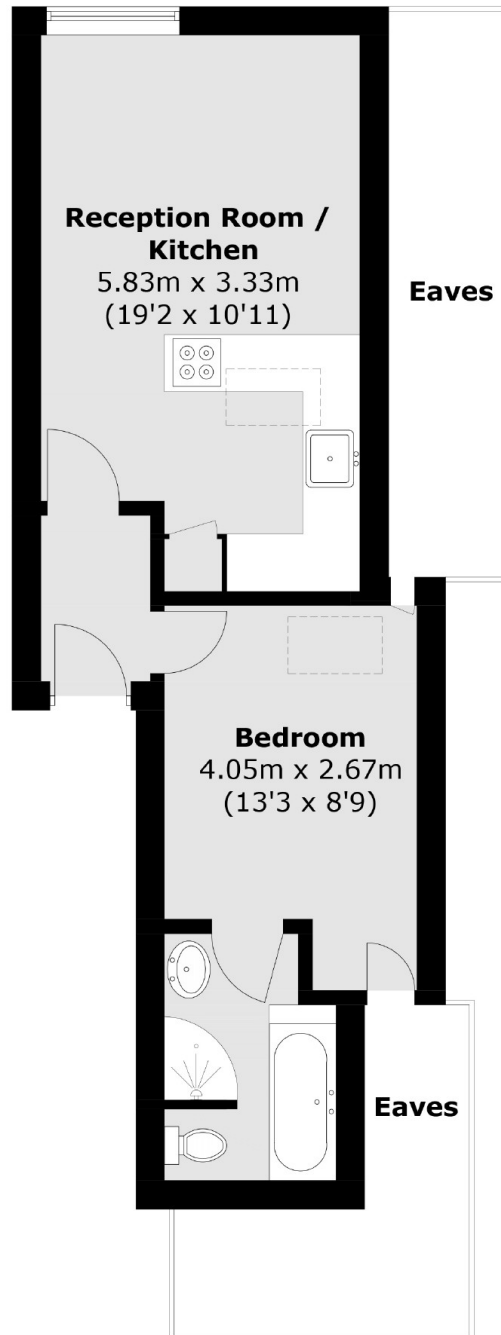
Located on a much sought-after street in Honor Oak Park, this lovely, one double bedroom top floor modern flat provides ample living accommodation. The apartment block was built in 2012, is well-maintained, has a communal garden at the rear including a bike store and off street parking.

Lowther Hill is close to Honor Oak and Forest Hill Stations, which offer frequent trains into London Bridge. In addition, you can pick up the London Overground towards east and north London meaning you can be in trendy Shoreditch or Hoxton. You can also get to Canary Wharf easily via Canada Water.

Features

- One Bedroom
- Top Floor
- Modern Apartment Building
- Communal Gardens
- Off Street Parking
- Close to Stations

Lowther Hill, London, SE23



Total area (approx.): 35.6 sq. m (383.2 sq. ft)
(Excluding Eaves)