



Grove Close, SE23

£550,000

Set over four floors, this spacious home offers two bedrooms plus an office/nursery. Highlights include a striking double-height kitchen with dining space, a bright mezzanine reception with balcony, a private garden and a garage.

Grove Close is well situated for Forest Hill and Honor Oak Park stations, providing quick links into central London. The area is surrounded by popular green spaces, including Horniman Gardens and Blythe Hill Fields, perfect for families and outdoor activities. Forest Hill town centre and Honor Oak High Street offer a variety of local shops, cafés, and amenities.

Features

- Three Bedrooms
- Large Kitchen
- Reception Room
- Private Balcony
- Private Garden
- Garage

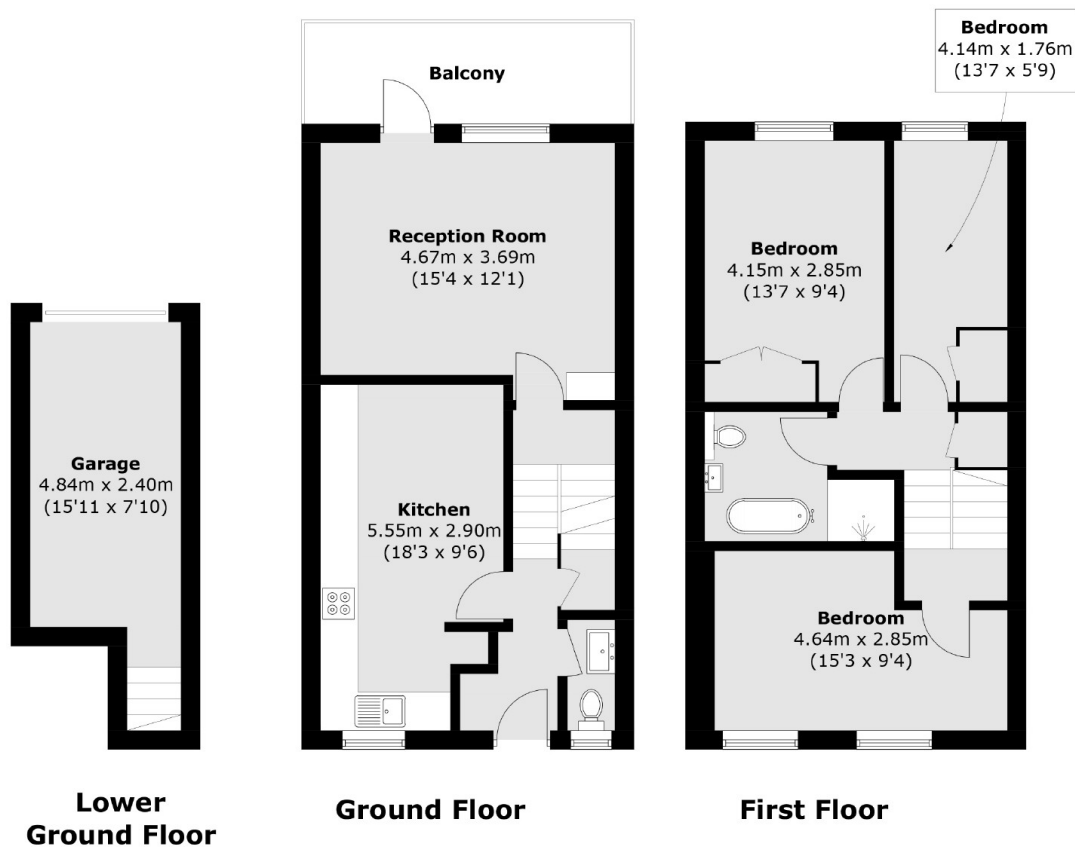


Grove Close, SE23

This unique home is set across four floors, offering cleverly designed living spaces and excellent proportions throughout. On the lower ground floor, you'll find a generous garage, providing secure parking or useful storage. The ground floor is a real highlight, featuring a striking dual height kitchen with ample natural light and modern finishes. From here, stairs lead up to a mezzanine level reception room, which overlooks the kitchen below and flows seamlessly onto a large private balcony. The split level design creates an impressive sense of space and light. The bedrooms are arranged over two further floors, each fitted with built-in wardrobes. Two of the bedrooms are particularly spacious, while the third is ideal as a guest room, home office, or nursery. The main bathroom has been recently renovated and includes both a bath and a separate large walk-in shower. The property also benefits from a private front garden, accessed directly from the ground floor, providing an inviting outdoor space ideal for relaxing or entertaining.



Grove Close, London, SE23



Total area (approx.): 101.2 sq. m (1,089.3 sq. ft)
(Including Garage)
Balcony: 8.3 sq. m (89.3 sq. ft)