



Talisman Square, SE26

£1,900 Per calendar month

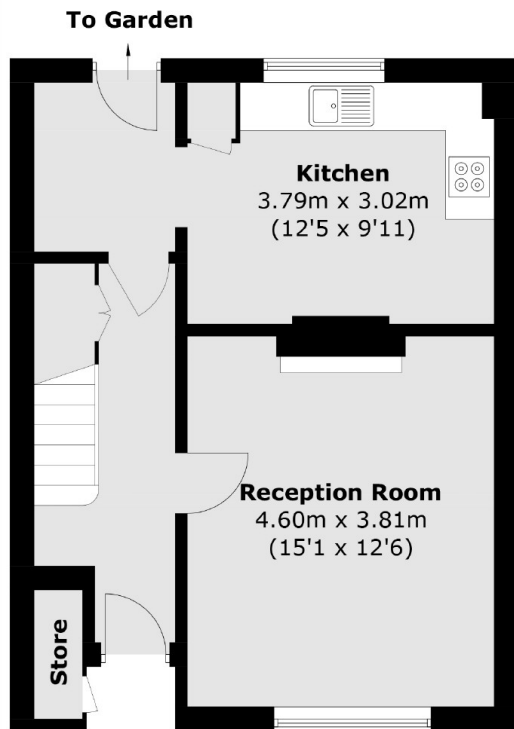
A three bedroom mid terrace house conveniently situated close to Sydenham station.

The property is located within close proximity of Sydenham, Crystal Palace and Forest Hill. The closest station is Sydenham which offers frequent services into London Bridge as well as overground services to Highbury & Islington.

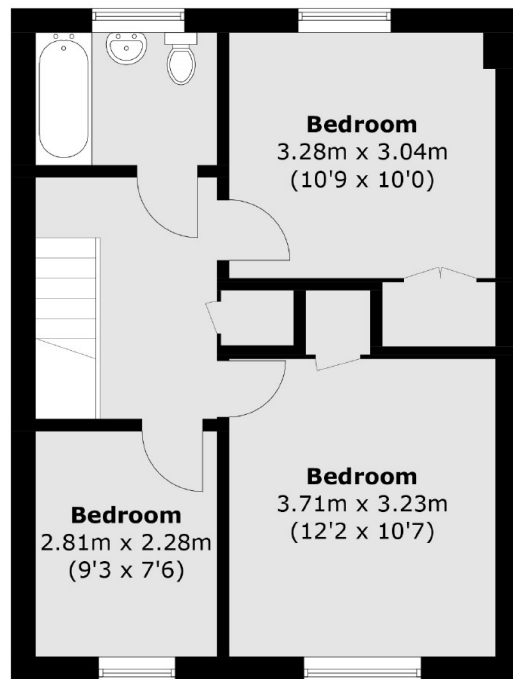
Features

Three Bedroom House
Mid Terrace
Spacious Reception Room
Separate Kitchen
Front/Rear Garden
Close to Station

Talisman Square, London, SE26



Ground Floor



First Floor

Total area (approx.): 86.4 sq. m (930.0 sq. ft)
Store (approx.): 0.9 sq. m (9.7 sq. ft)