



Wastdale Road, SE23

£350,000

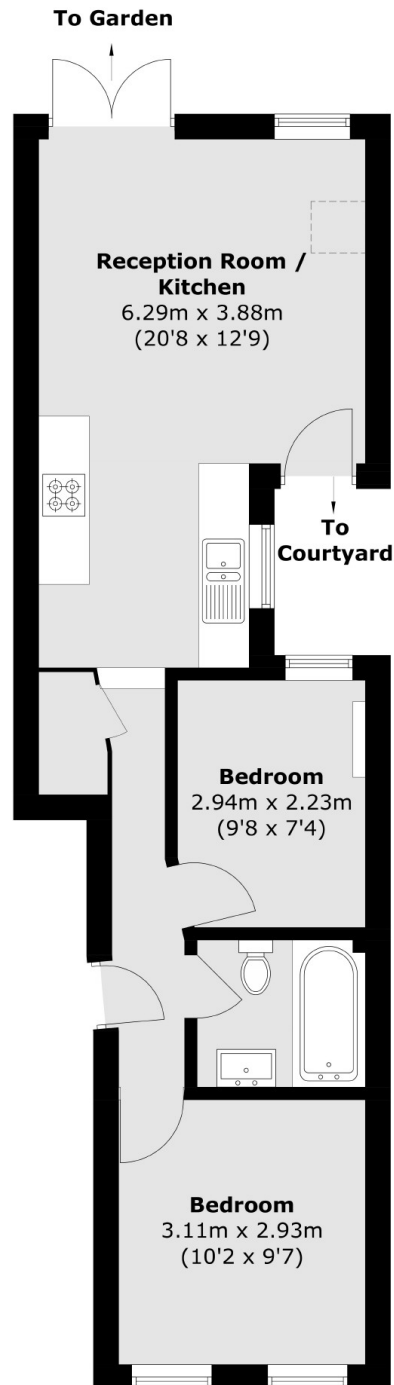
A well presented two bedroom Victorian ground floor flat with a private garden and is located close to Forest Hill and Honor Oak stations.

Wastdale Road is located between both Forest Hill and Honor Oak Park stations allowing quick and easy access into central London via mainline services as well as London Overground services. Close proximity to Forest Hill High Street and Honor Oak Parade as well as local schools.

Features

- Two Bedroom
- Victorian
- Private Garden
- Open Plan
- Long Lease
- Close To Stations

Wastdale Road,
London, SE23



Total area (approx.): 47.3 sq. m (509.0 sq. ft)

Dexters

Honor Oak
61 Honor Oak Park
London
SE23 1EA
Sales
020 8291 9556

Energy Rating: C. We aim to make our particulars both accurate and reliable. However they are not guaranteed; nor do they form part of an offer or contract. If you require clarification on any points then please contact us, especially if you're traveling some distance to view. Please note that appliances and heating systems have not been tested and therefore no warranties can be given as to their good working order.

 **RICS** | Regulated
Estate Agent
and Letting Agent

[dexters.co.uk](https://www.dexters.co.uk)