



Stondon Park, SE23

£475,000

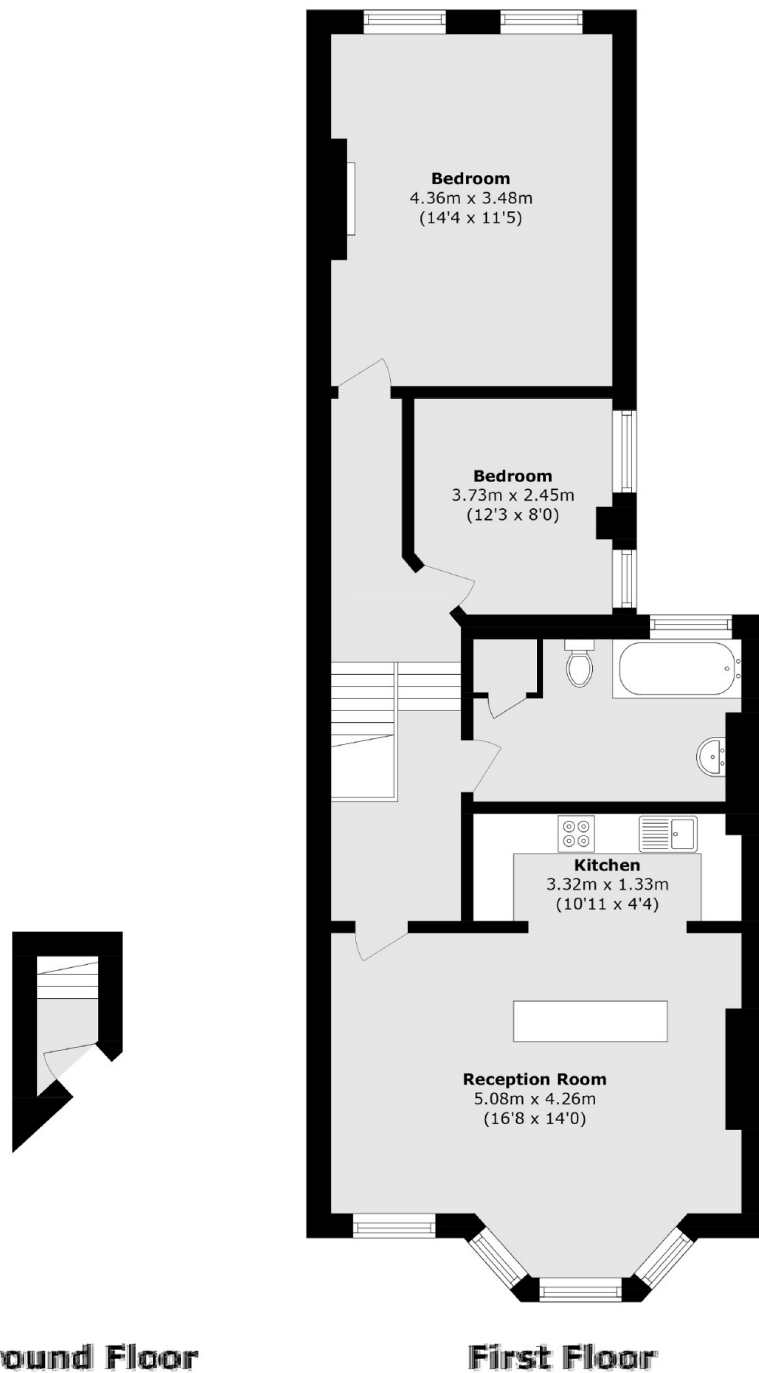
A well presented double bedroom Victorian conversation which benefits from a Share of Freehold and potential to extend (STPP).

Stondon Park is a popular road connecting Honor Oak Park and Crofton Park, offering convenient access to both stations with fast and regular mainline services into Central London and the City. Additionally, the London Overground provides excellent transport links.

Features

- Two Bedrooms
- Top Floor
- Period Maisonette
- Share Of Freehold
- Close To Stations
- Chain Free

Stondon Park, London, SE23



Total area (approx.): 64.7 sq. m (696.4 sq. ft)

Dexters

Honor Oak
61 Honor Oak Park
London
SE23 1EA
Sales
020 8291 9556

Energy Rating: 0. We aim to make our particulars both accurate and reliable. However they are not guaranteed; nor do they form part of an offer or contract. If you require clarification on any points then please contact us, especially if you're traveling some distance to view. Please note that appliances and heating systems have not been tested and therefore no warranties can be given as to their good working order.

 **RICS** | Regulated
Estate Agent
and Letting Agent

[dexters.co.uk](https://www.dexters.co.uk)