



Glynde Street, SE4

£435,000

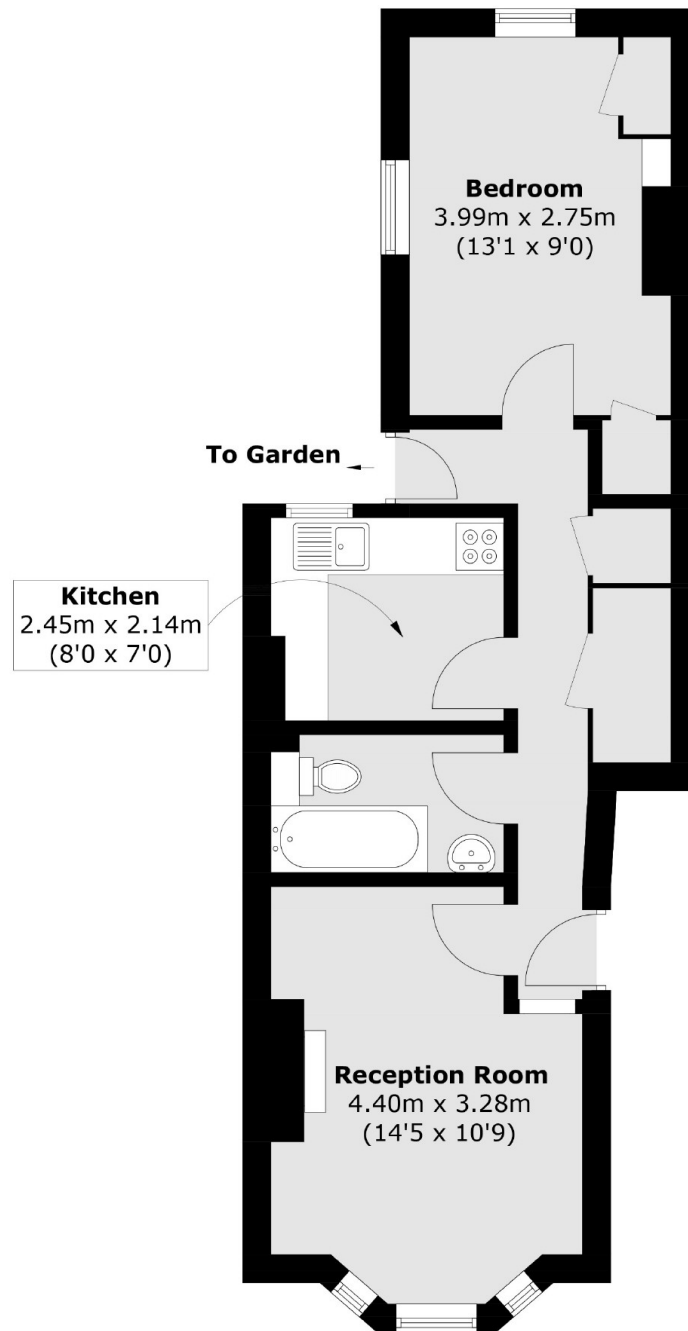
A charming one bedroom Victorian garden flat, offers a perfect blend of period features and modern living. With high ceilings, a decorative fireplace, and plenty of natural light, the spacious living area creates a warm and inviting atmosphere. The double bedroom is well proportioned, while the stylish kitchen and sleek bathroom offer contemporary comfort. The private garden is a real highlight, providing a peaceful outdoor retreat.

Glynde Street is conveniently located close to Crofton Park Station which offers easy access to the city. It's surrounded by green spaces like Hilly Fields and Ladywell Fields, plus a vibrant selection of shops and cafes on Brockley Road.

Features

- Victorian Conversion
- One Bedroom
- Share Of Freehold
- Private Garden
- Desirable Location
- Close To Stations

Glynde Street,
London, SE4



Total area (approx.): 43.0 sq. m (462.8 sq. ft)

Dexters

Honor Oak
61 Honor Oak Park
London
SE23 1EA
Sales
020 8291 9556

Energy Rating: C. We aim to make our particulars both accurate and reliable. However they are not guaranteed; nor do they form part of an offer or contract. If you require clarification on any points then please contact us, especially if you're traveling some distance to view. Please note that appliances and heating systems have not been tested and therefore no warranties can be given as to their good working order.

 **RICS** | Regulated
Estate Agent
and Letting Agent

[dexters.co.uk](https://www.dexters.co.uk)