



Perry Rise, SE23

£425,000

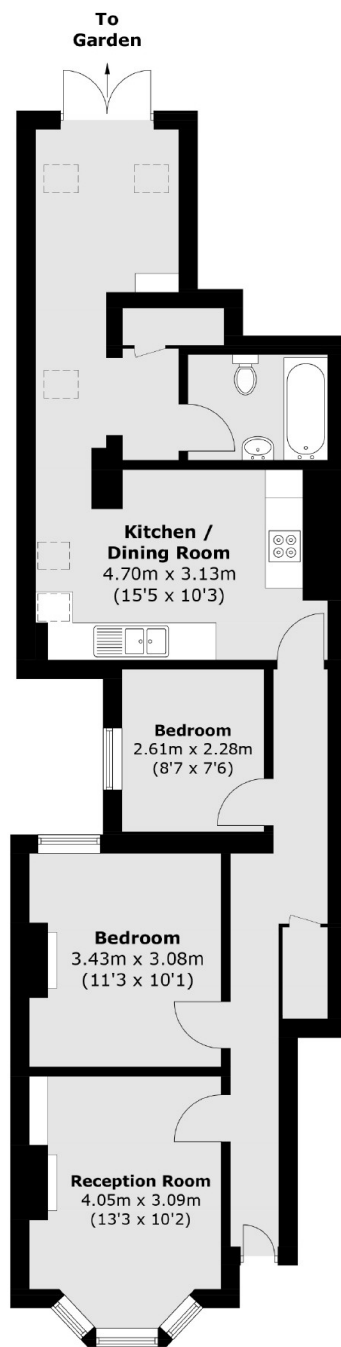
A spacious two double ground floor Victorian conversion which is being sold chain free and is well located for Catford, Catford Bridge and Honor Oak Park stations.

Perry Hill is conveniently placed for Catford and Catford Bridge stations from where there are fast and frequent services into Charing Cross and Blackfriars respectively. For anyone needing the London Overground, either Forest Hill or Honor Oak Park station is also within easy reach.

Features

Period Conversion
Two Bedrooms
Private Garden
Share Of Freehold
Close To Stations
Chain Free

Perry Rise, London, SE23



Ground Floor

Total area (approx.): 73.0 sq. m (785.8 sq. ft)

Dexters

Honor Oak
61 Honor Oak Park
London
SE23 1EA
Sales
020 8291 9556

Energy Rating: D. We aim to make our particulars both accurate and reliable. However they are not guaranteed; nor do they form part of an offer or contract. If you require clarification on any points then please contact us, especially if you're traveling some distance to view. Please note that appliances and heating systems have not been tested and therefore no warranties can be given as to their good working order.



dexters.co.uk