



Honor Oak Park, SE23

£350,000

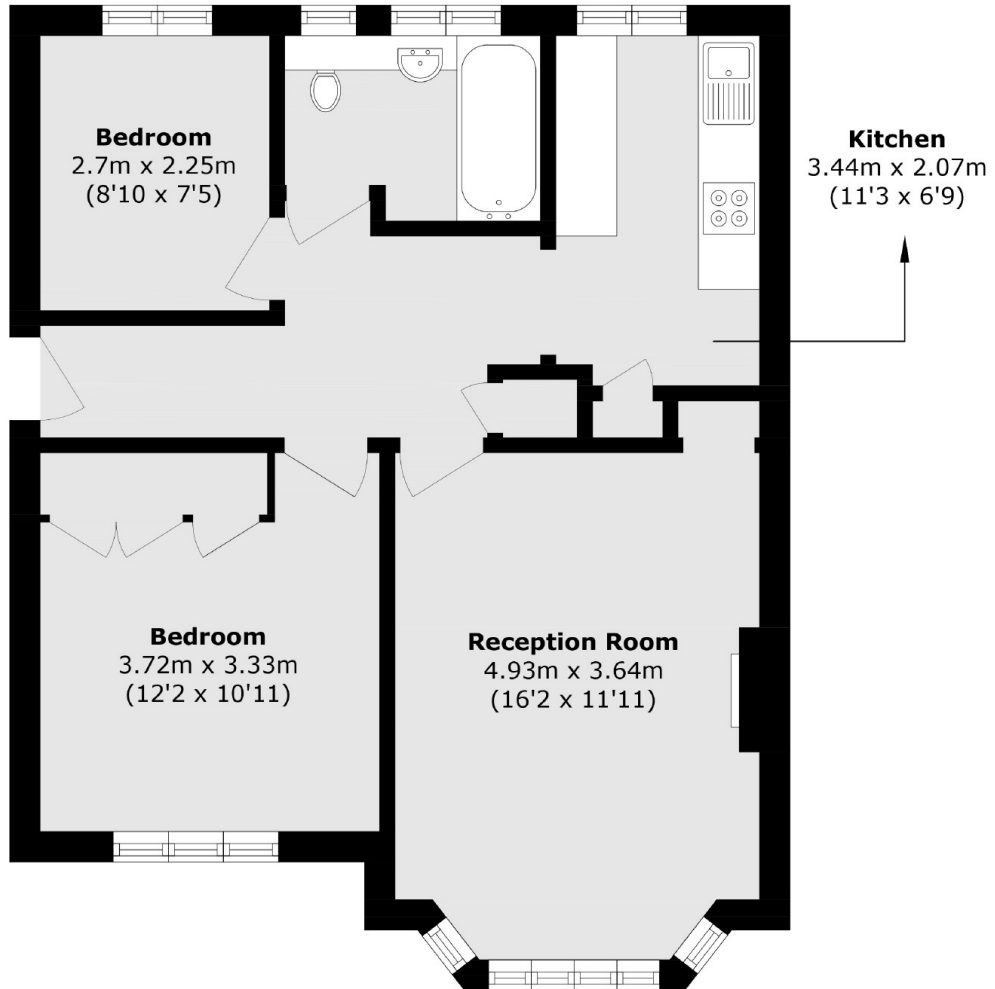
A homely two bedroom purpose built flat on the ground floor of a well maintained 1930s building favourably positioned for Honor Park station. There is off-road parking well maintained communal grounds and offered with no onward chain.

Honor Oak Park is well positioned for several green spaces including Brenchley Gardens and Blythe Hill Fields. The local independent shops and café in Honor Oak along with Overground are within easy reach.

Features

- Two Bedrooms
- Off Street Parking
- Large Bathroom
- Communal Gardens
- Bicycle Storage
- Close To Overground

Honor Oak Park, London, SE23



Total area (approx.): 58.09 sq. m (633.9 sq. ft)