



## Buckthorne Road, SE4

£725,000

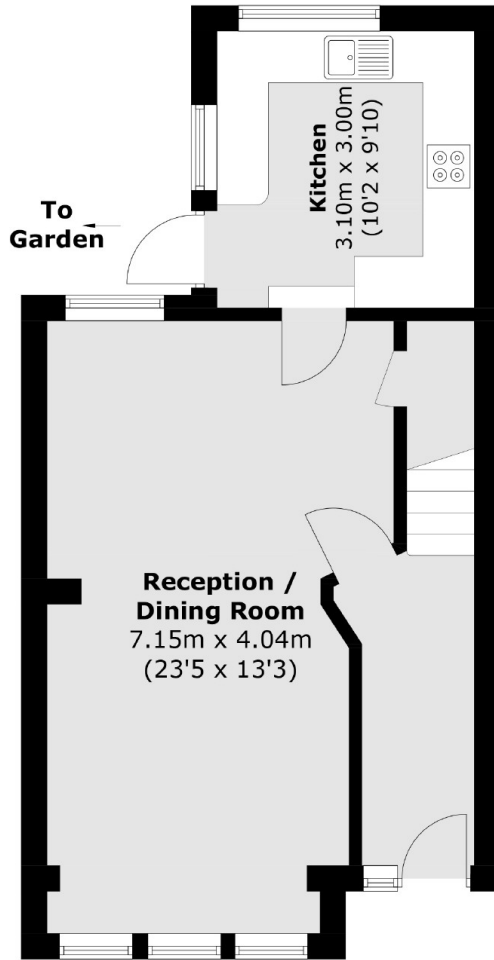
A two double bedroom Freehold house with a private west facing garden and great potential to extend (STPP). The property is well located for Crofton Park station and is close to amenities.

Buckthorne Road is a popular residential road which is conveniently located for Crofton Park and Honor Oak Park train stations. For families, there is a fantastic selection of local schools including Stillness and Beecroft. The great parks, independent cafes, shops and restaurants of Crofton Park and Honor Oak Park are located close by and Nunhead and Peckham Rye are an easy walk.

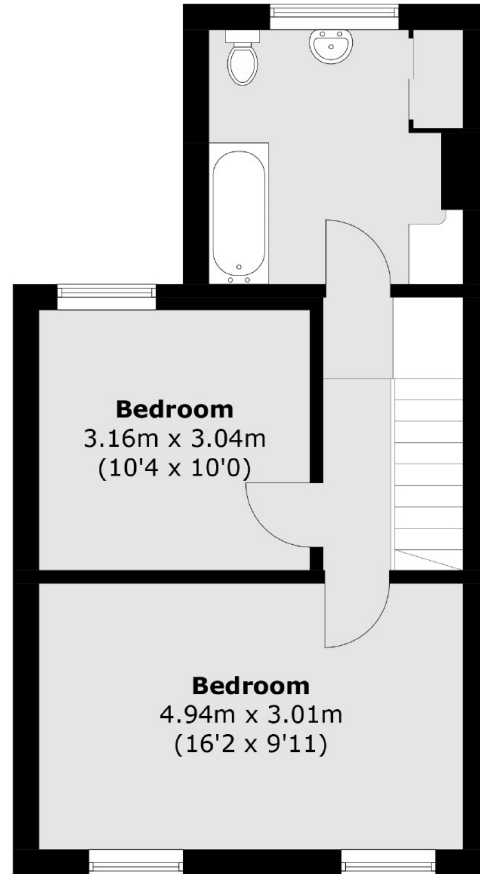
### Features

- Two Bedrooms
- Large Reception Room
- Separate Kitchen
- Freehold
- Private West Facing Garden
- Close To Transport

Buckthorne Road,  
London, SE4



**Ground Floor**



**First Floor**

Total area (approx.): 85.4 sq. m (919.3 sq. ft)