



## Adenmore Road, SE6

### £415,000

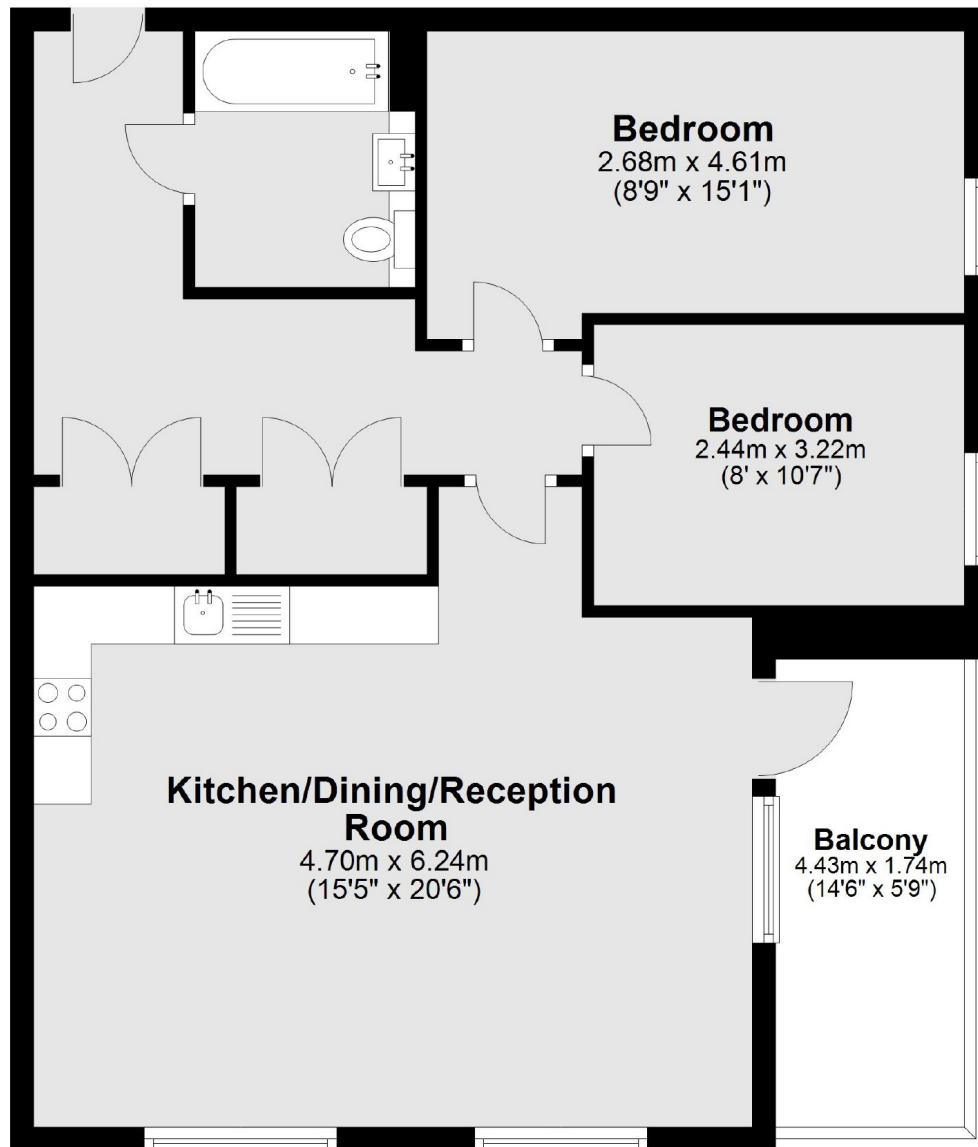
This beautifully presented two double bedroom first floor apartment which is located close to transport links and amenities, is metres away from Ladywell Fields park, comes with its own private balcony and is part of the modern and much sought-after Catford Green development. The property boasts two double bedrooms and a substantial 20' x 15' open plan kitchen and living area, ideal for entertaining, with doors leading out to a private balcony. The flat also offers a smart bathroom and the fully fitted kitchen comes with all integrated appliances. Further benefits include plenty of storage, a long lease and allocated parking.

The development is ideally placed with quick access to London Bridge and London Blackfriars, as well as connecting to the Bakerloo Line at Elephant & Castle from Catford and Catford Bridge stations. The Catford Green development includes a pedestrian area and landscaping down the river running through the development.

### Features

- Two Double Bedrooms
- First Floor Apartment
- Private Balcony
- Allocated Parking
- Close to Stations
- Chain Free

Adenmore Road,  
London, SE6



Main area: Approx. 68.6 sq. metres (738.2 sq. feet)  
Plus balconies, approx. 7.7 sq. metres (83.0 sq. feet)

**Dexters**

Honor Oak  
61 Honor Oak Park  
London  
SE23 1EA  
Sales  
020 8291 9556

Energy Rating: B. We aim to make our particulars both accurate and reliable. However they are not guaranteed; nor do they form part of an offer or contract. If you require clarification on any points then please contact us, especially if you're traveling some distance to view. Please note that appliances and heating systems have not been tested and therefore no warranties can be given as to their good working order.

 **RICS** | Regulated  
Estate Agent  
and Letting Agent

dexters.co.uk