



## Kirkdale, SE26

£650,000

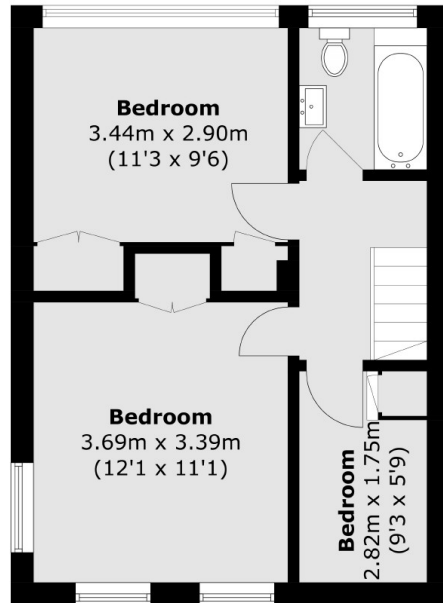
A well presented three bedroom semi-detached Freehold house with a private garden, garage and potential to extend (STPP).

Kirkdale is located 0.7 miles to Forest Hill Station offering excellent transport links into London Bridge, Victoria, Canada Water, Shoreditch and many other locations. The property is well located for the local schools, Horniman museum and gardens. Local amenities including a variety of restaurants, coffee shops, parks, cafes are also nearby.

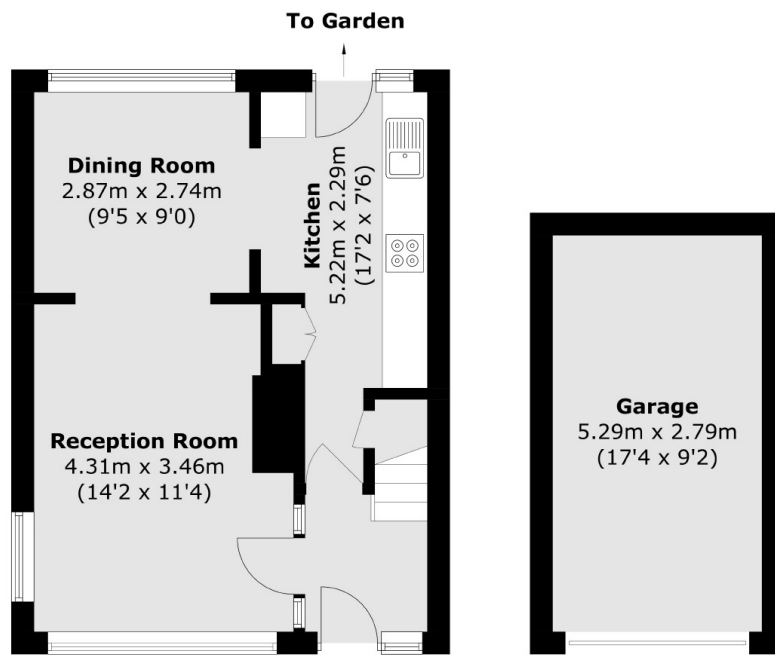
### Features

- Three Bedrooms
- Private Garden
- Garage
- Off Street Parking
- Potential To Extend (STPP)
- Great Location

# Kirkdale, London, SE26



**First Floor**



**Ground Floor**

**(Not Shown In Actual  
Location / Orientation)**

Total area (approx.): 76.8 sq. m (826.6 sq. ft)  
Garage: 14.7 sq. m (158.2 sq. ft)