



Ravensbourne Park, SE6 £215,000

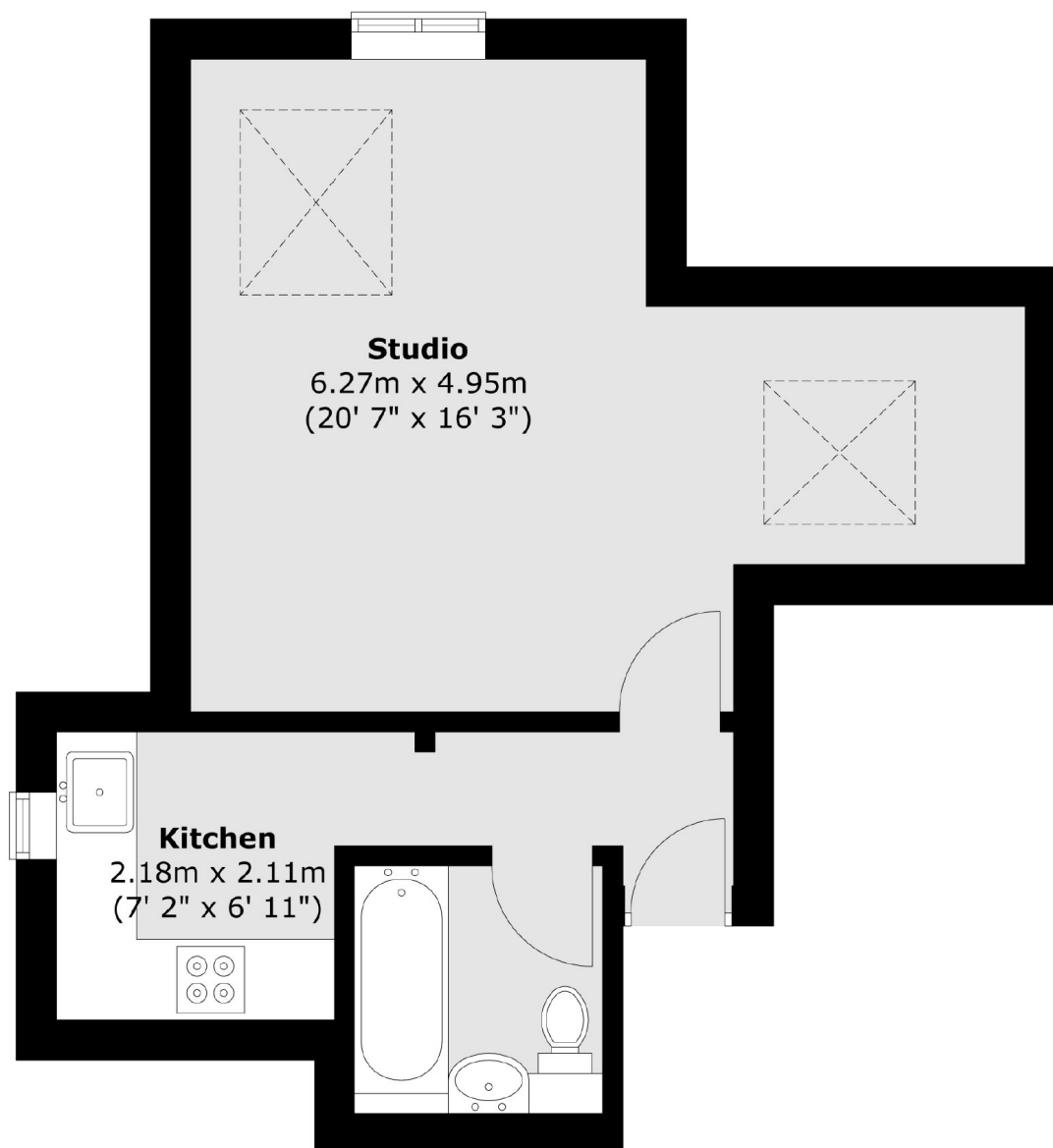
A charming studio flat with a separate kitchen and bathroom situated on the doorstep of Ladywell Fields. The property is stylishly decorated throughout and benefits from off street parking and a communal garden.

Ravensbourne Park runs between Crofton Park and Catford and has convenient access to Crofton Park, Catford and Catford Bridge train stations. The amenities of both Crofton Park and Brockley Road are close by and there are a number of Ofsted 'Outstanding' Schools locally.

Features

- Studio Flat
- Top Floor
- Separate Kitchen
- Communal Gardens
- Off Street Parking
- Close To Stations

Ravensbourne Park, London, SE6



Total area (approx.) : 35.8 sq. m (385 sq. ft)