



## Netherby Road, SE23

£325,000

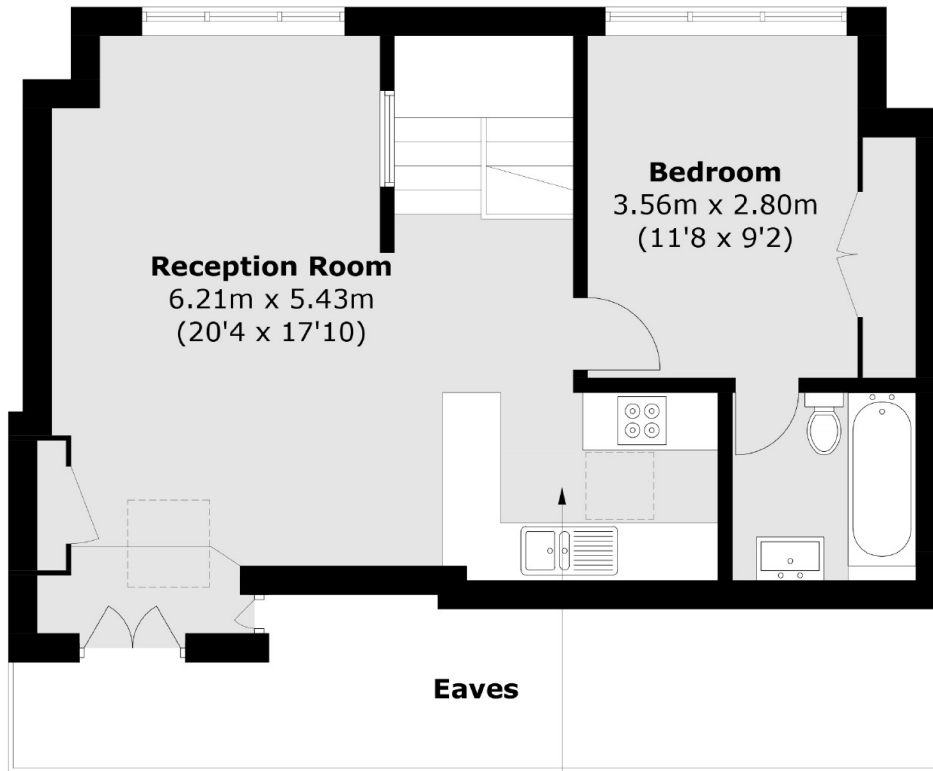
This one bedroom top floor flat is part of a substantial Edwardian-style house in a sought after residential road on the borders of East Dulwich and Honor Oak Park. It boasts a light and airy living room opening up into a modern kitchen, bedroom, a stylish bathroom and a communal garden at the rear.

Netherby Road is nearby to Honor Oak Park station which provides great links to London Bridge as well as London Overground services northwards to Shoreditch and Highbury and Islington.

### Features

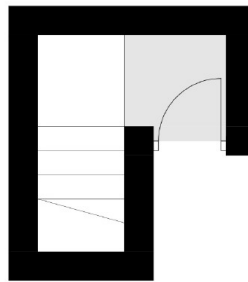
- One Bedroom
- Period Conversion
- Open Plan
- Communal Gardens
- Share Of Freehold
- Close To Station

Netherby Road,  
London, SE23



**Kitchen**  
2.58m x 1.94m  
(8'6 x 6'4)

### Third Floor



### Second Floor

Total area (approx.): 53.9 sq. m (580.2 sq. ft)  
(Excluding Eaves)