



Riseldine Road, SE23

£2,750 Per calendar month

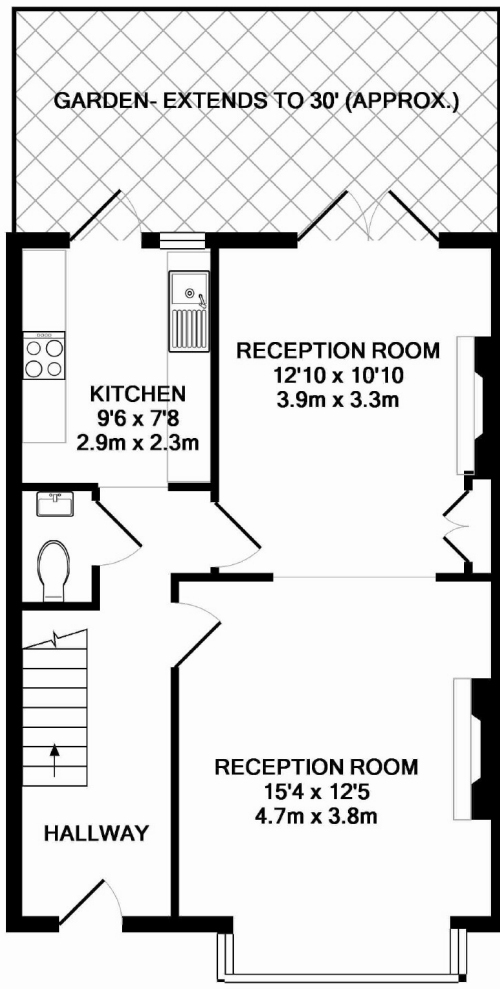
A three bedroom family home located close to Honor Oak station.

Riseldine Road is located very close to Honor Oak station which has regular services into London Bridge and the City. Honor Oak Park is also close by which has a variety of cafes, restaurants and shops.

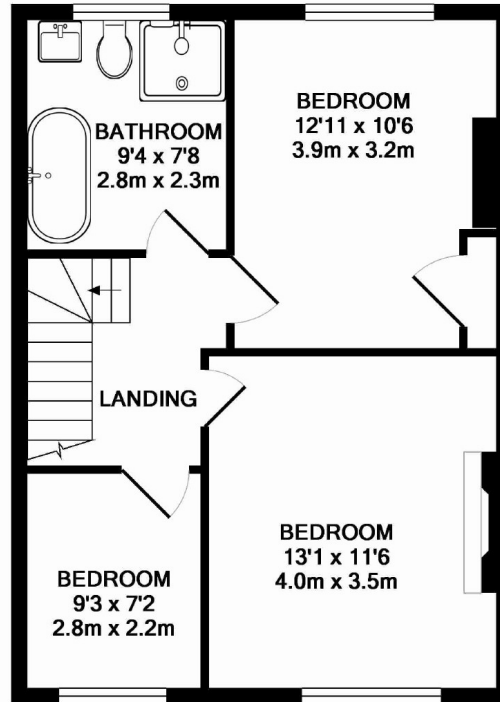
Features

- Three Bedrooms
- Through Reception Room
- Well Presented Throughout
- Private Garden
- Close to Station
- Close To Amenities

Riseldine Road, London, SE23



GROUND FLOOR
APPROX. FLOOR
AREA 513 SQ.FT.
(47.7 SQ.M.)



1ST FLOOR
APPROX. FLOOR
AREA 488 SQ.FT.
(45.3 SQ.M.)



RISELDINE RD SE23
TOTAL APPROX. FLOOR AREA 1001 SQ.FT. (93.0 SQ.M.)

Whilst every attempt has been made to ensure the accuracy of the floor plan contained here, measurements of doors, windows, rooms and any other items are approximate and no responsibility is taken for any error, omission, or mis-statement. This plan is for illustrative purposes only and should be used as such by any prospective purchaser. The services, systems and appliances shown have not been tested and no guarantee as to their operability or efficiency can be given
Made with Metropix ©2012