



Perry Hill, SE6

£500,000

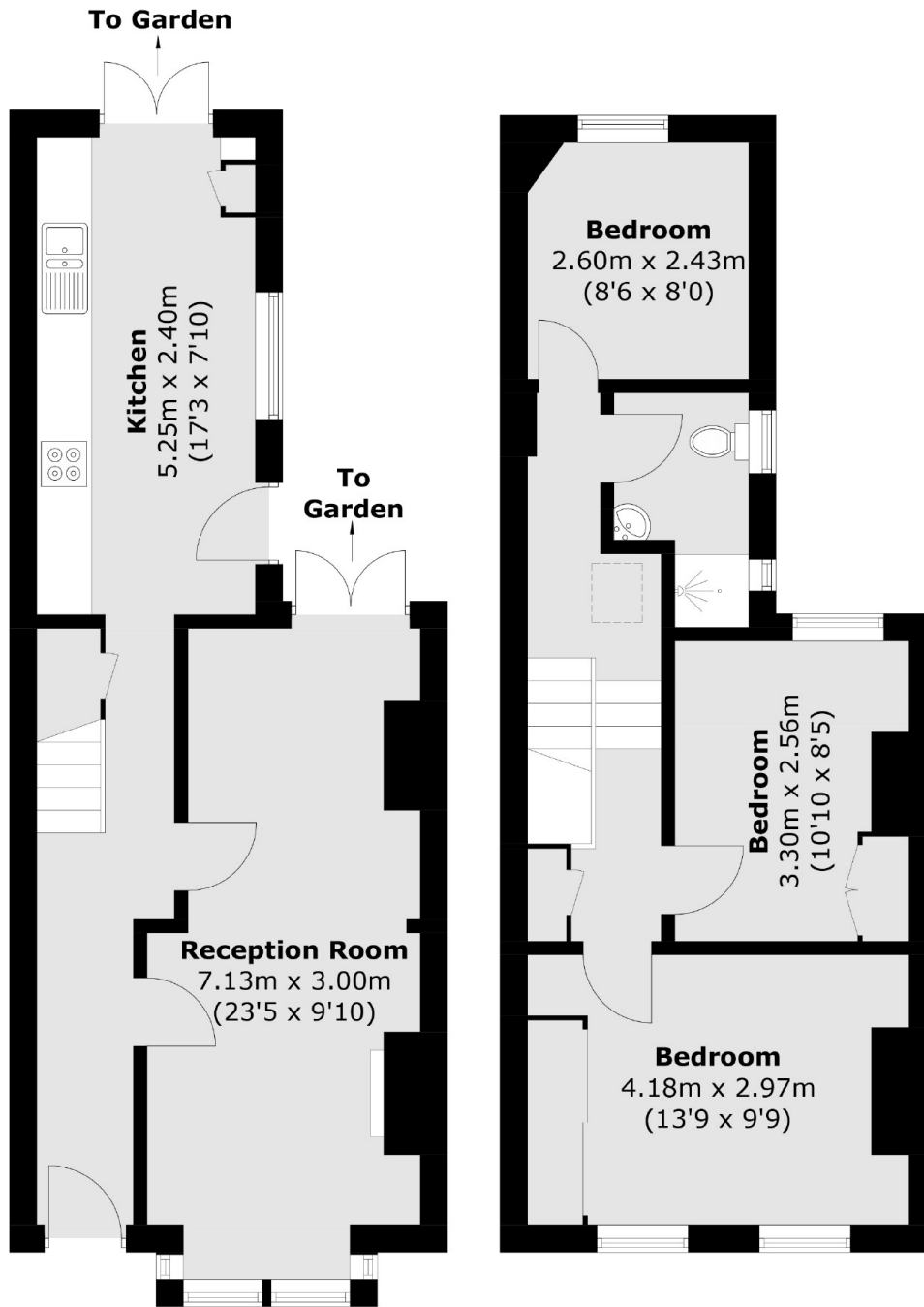
A well presented three bedroom terraced Freehold house with potential to extend (STPP) and a private west facing garden.

Perry Hill is conveniently placed for Catford and Catford Bridge stations from where there are fast and frequent services into Charing Cross and Blackfriars respectively. For anyone needing the London Overground, either Forest Hill or Honor Oak Park station is also within easy reach.

Features

- Three Bedrooms
- Terraced
- Great Condition
- Freehold
- Potential To Extend (STPP)
- West Facing Garden

Perry Hill,
London, SE6



Ground Floor

First Floor

Total area (approx.): 82.4 sq. m (886.9 sq. ft)