



Haseley End, SE23

£2,000 Per calendar month

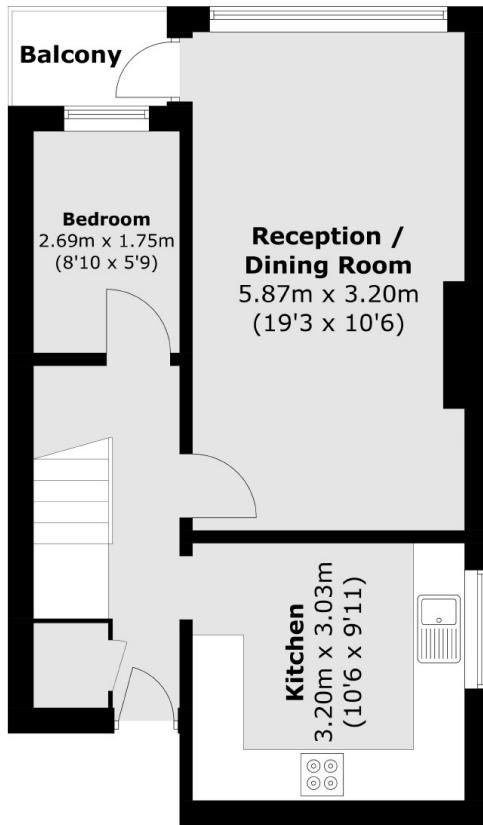
** HMO - suitable for professional sharers ** first floor three bedroom split level apartment, with an additional study, situated in the heart of Forest Hill.

Closest Stations are Honor Oak Park and Forest Hill.

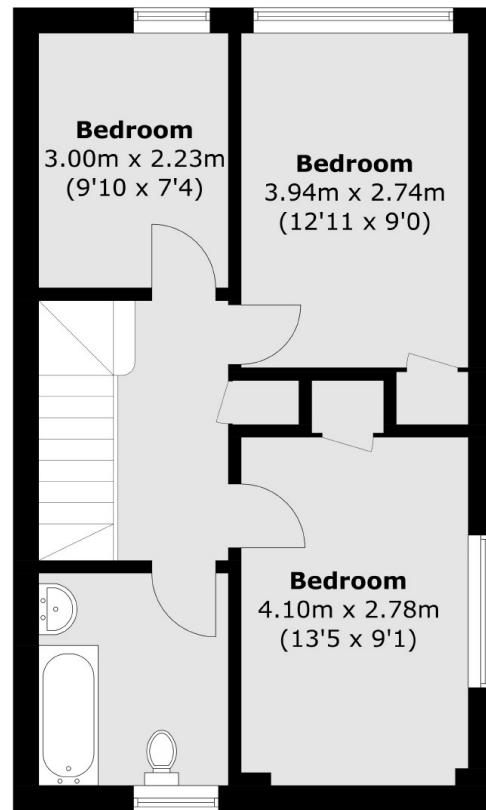
Features

Purpose Built Split Level
Apartment
Three Bedrooms
Family Bathroom
Separate Living Room
Separate Kitchen
Private Balcony

Haseley End,
London, SE23



Second Floor



Third Floor

Total area (approx.): 86.6 sq. m (932.1 sq. ft)
Balcony : 2.0 sq. m (21.5 sq. ft)