



## Wastdale Road, SE23

£475,000

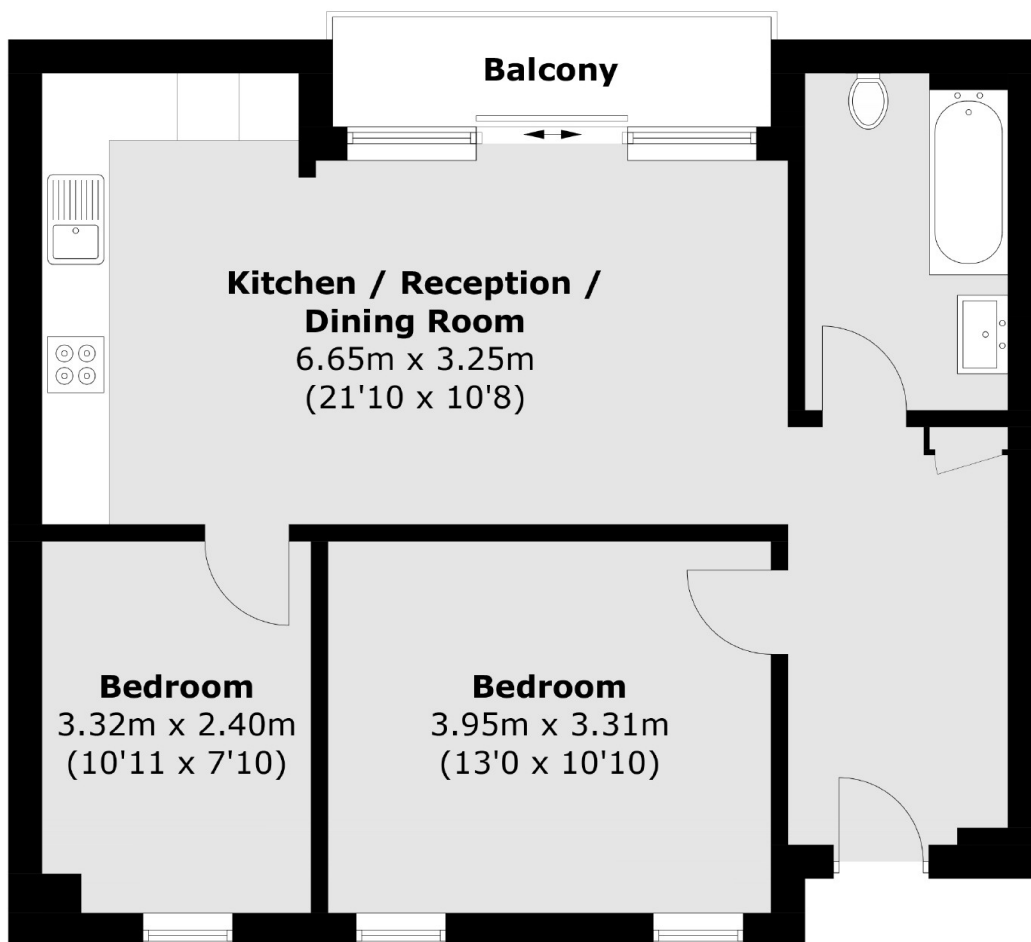
A well presented two bedroom modern top floor flat with underfloor heating throughout the property, a modern kitchen and bathroom as well as a private balcony.

Wastdale Road is located between both Forest Hill and Honor Oak Park stations allowing quick and easy access into central London via mainline services as well as London Overground services. Close proximity to Forest Hill High Street and Honor Oak Parade as well as local schools.

### Features

- Top Floor
- Two Bedrooms
- Open Plan
- Private Balcony
- Long Lease
- Underfloor Heating Throughout

Wastdale Road,  
London, SE23



Total area (approx.): 59.7 sq. m (642.6 sq. ft)  
Balcony area (approx.): 3.8 sq. m (40.9 sq. ft)