



## Ackroyd Road, SE23

£1,950 Per calendar month

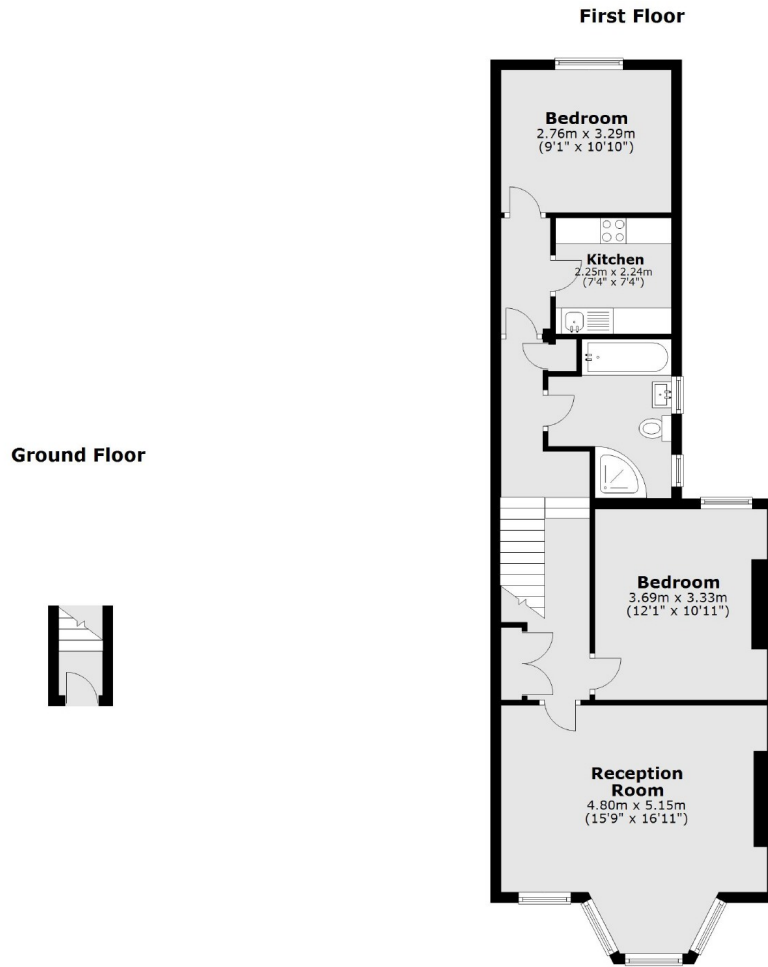
A First floor two double bedroom Victorian property located close to Honor Oak Railway.

Honor Oak Park station provides fast and frequent services to London Bridge as well as London Overground services Northwards to Shoreditch and Highbury and Islington. You can change at Canada Water for easy access to Canary Wharf.

### Features

Victorian  
Two Double Bedrooms  
Reception room  
Close to Station  
Four Piece Bathroom Suite  
Excellent Location

# Ackroyd Road, London, SE23



Total area: approx. 69.7 sq. metres (750.1 sq. feet)