



Wastdale Road, SE23

£575,000

An impressive two bedroom modern ground floor flat with double aspect ceilings, modern kitchen and bathroom with a wrap around private garden.

Wastdale Road is located between both Forest Hill and Honor Oak Park stations allowing quick and easy access into central London via mainline services as well as London Overground services. Close proximity to Forest Hill High Street and Honor Oak Parade as well as local schools.

Features

- Well Presented
- Two Bedrooms
- Ground Floor
- Open Plan
- Long Lease
- Private Garden

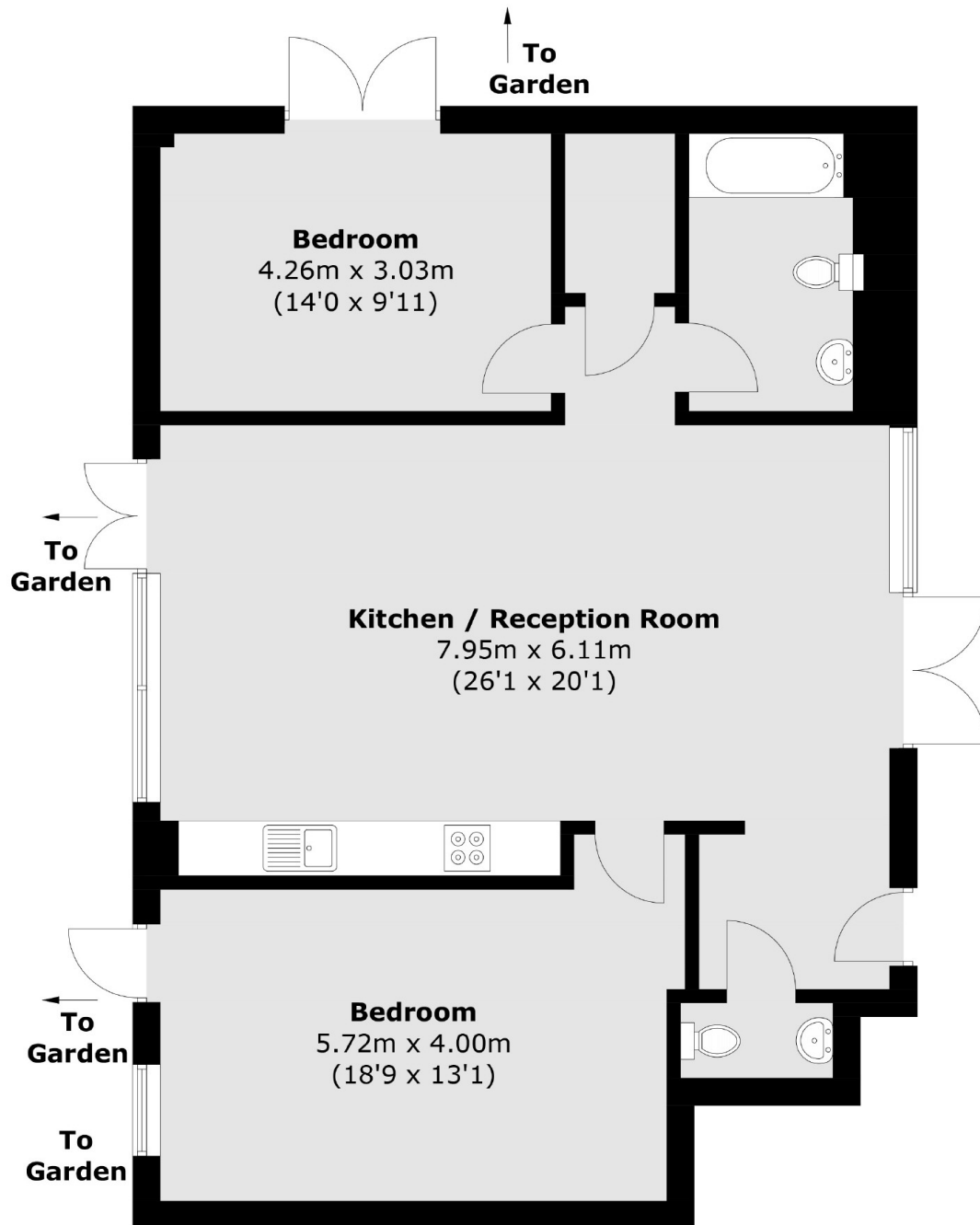


Wastdale Road, SE23

A private entrance to the property opens up to a spacious family space, comprising of a large living room and modern fitted kitchen with high ceilings throughout. Two large double bedrooms each with doors opening out onto the private garden. The property further benefits from ample storage, a separate w.c and is located in a private gated development.



Wastdale Road,
London, SE23



Total area (approx.): 88.4 sq. m (951.5 sq. ft)

Dexters

Honor Oak
61 Honor Oak Park
London
SE23 1EA
Sales
020 8291 9556

Energy Rating: B. We aim to make our particulars both accurate and reliable. However they are not guaranteed; nor do they form part of an offer or contract. If you require clarification on any points then please contact us, especially if you're traveling some distance to view. Please note that appliances and heating systems have not been tested and therefore no warranties can be given as to their good working order.

 **RICS** | Regulated
Estate Agent
and Letting Agent

dexters.co.uk