



Honor Oak Park, SE23

£445,000

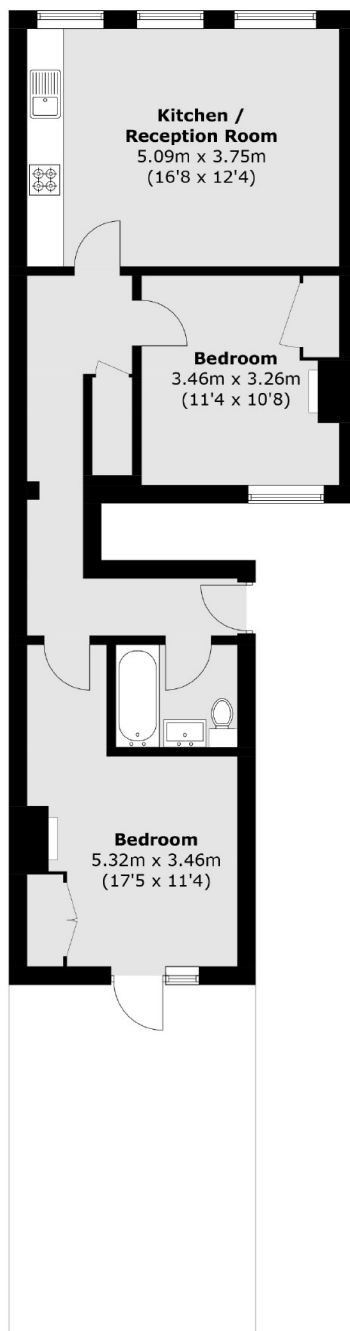
Located a few minutes walk away from Honor Oak Park station and accessed from its own front door is this two double bedroom, first floor maisonette has a private terrace and is offered chain free.

Honor Oak Park station is a short walk from the property where there are fast and regular services into London Bridge as well as Overground services northwards to Shoreditch and Highbury and Islington, and southwards to Croydon.

Features

- Two Double Bedrooms
- Newly Refurbished
- First Floor
- Private Terrace
- Close to Station
- Chain Free

Honor Oak Park, London, SE23



Total area (approx.): 62.5 sq. m (672.7 sq. ft)
Patio : 22.7 sq. m (244.3 sq. ft)