



## Wyleu Street, SE23

£575,000

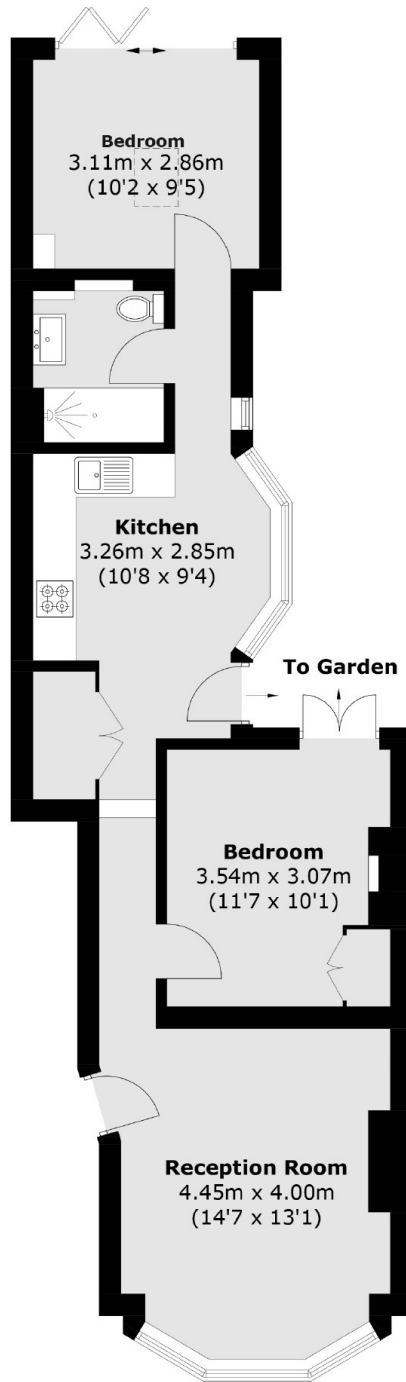
Located close to Honor Oak Park station, this charming two bedroom ground floor period conversion flat comes with its own west-facing garden and share of freehold. Comprising of a bright and spacious bay fronted reception room, a double bedroom with French doors leading out to the garden, a modern fitted kitchen/diner, a stylish bathroom and a further bedroom with doors leading out onto a private west facing garden.

Wyleu Street is a short walk to Honor Oak Park station from where there are services into London Bridge as well as Overground services northwards to Shoreditch and Highbury and Islington.

### Features

- Two Bedrooms
- Period Conversion
- Ground Floor
- West Facing Garden
- Share of Freehold
- Close to Station

Wyleu Street,  
London, SE23



Total area (approx.): 60.9 sq. m (655.5 sq. ft)