



Buckley Close, SE23

£825,000

Arranged over three floors, and measuring just over 1,300 sq ft, this well presented three bedroom, modern townhouse offers spacious living accommodation, off street parking and two separate private gardens.

Buckley Close is a quiet residential road within easy reach of the amenities along Lordship Lane in East Dulwich. As for transport, the closest rail link is Honor Oak Park providing fast and frequent services into central London and Canary Wharf.

Features

- Three Bedrooms
- Two Bathrooms
- Town House
- Modern Fitted Kitchen
- Large Private Garden
- Private Parking

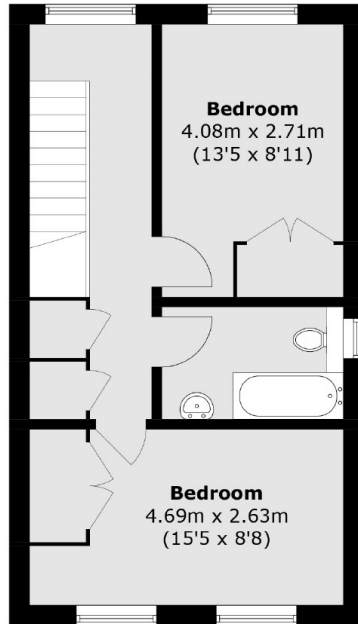


Buckley Close, SE23

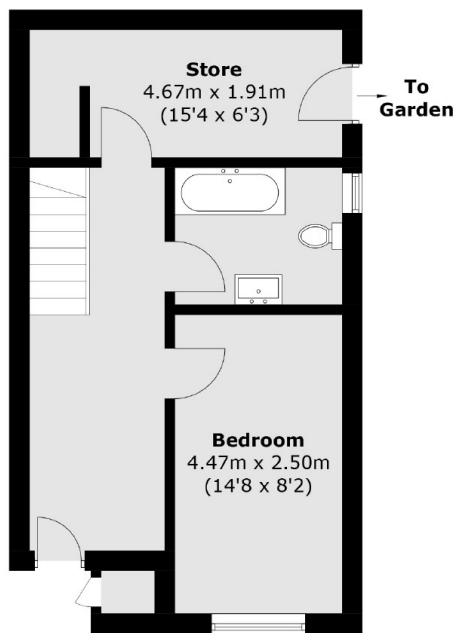
The property comprises on the ground floor, a wide hallway, a double bedroom, a family bathroom and a study/TV room with doors leading to the garden. On the first floor there is a bright spacious reception room and a stylish kitchen-diner leading out to the rear garden. On the top floor there is a further two double bedrooms and another family bathroom. Externally, the garden is mainly laid to lawn with a patio area and there is also private parking to the front.



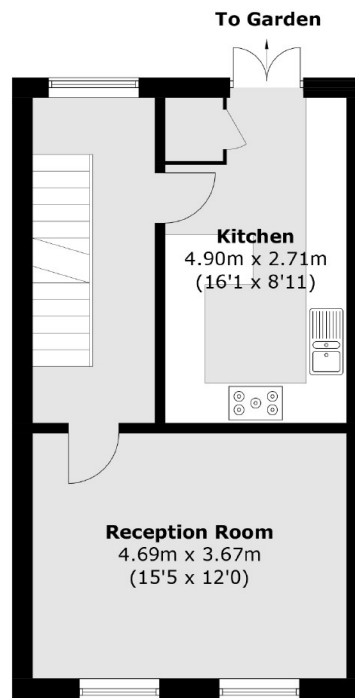
Buckley Close, London, SE23



Second Floor



Ground Floor



First Floor

Total area (approx.): 121.6 sq. m (1,308.8 sq. ft)