



Sydenham Hill, SE26

£2,850 Per calendar month

Dexters



Sydenham Hill, SE26

Located within a private parkland estate and set within a beautiful Victorian mansion, this two bedroom apartment would be perfect for a couple or single occupant.

Measuring just under 1000 sq ft this property has been refurbished with no expense spared. It has a large living / reception room, two double bedrooms, two bathrooms and a private terrace. Beltwood Park residences further benefits from a communal spa, sauna, steam room and gym as well as secure off street parking and landscaped gardens.

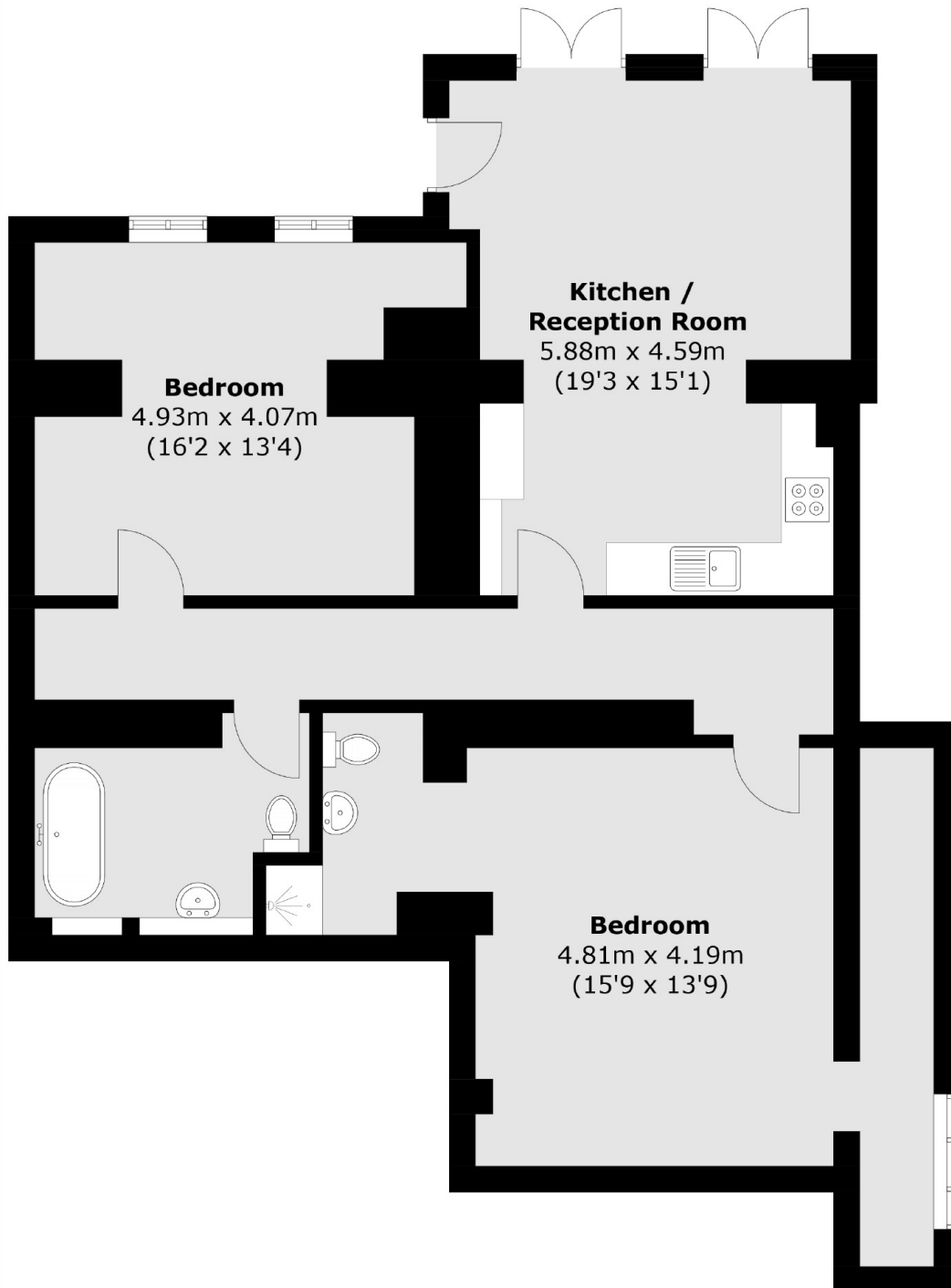
Beltwood Park Residences is a secure private development located conveniently for Duwich Woods, Sydenham Hill and Crystal Palace. The nearest stations would be Sydenham Hill and West Dulwich which offer frequent services into London Victoria.

Features

- Two Double Bedrooms
- Two Bathrooms
- Private Estate
- Communal Spa/Sauna
- Secure Parking
- Landscaped Gardens



Sydenham Hill,
London, SE26



Total area (approx.): 99.9 sq. m (1069.9 sq. ft)