



Sydenham Hill, SE26

£3,250 Per calendar month

Dexters



Sydenham Hill, SE26

Located within a private parkland estate and set within a beautiful Victorian mansion, this two bedroom apartment would be perfect for a couple or single occupant.

Measuring just under 1000 sq ft this property has been refurbished with no expense spared. It has a large living / reception room, two double bedrooms, two bathrooms and a private terrace. Beltwood Park residences further benefits from a private spa, sauna, steam room and gym as well as secure off street parking.

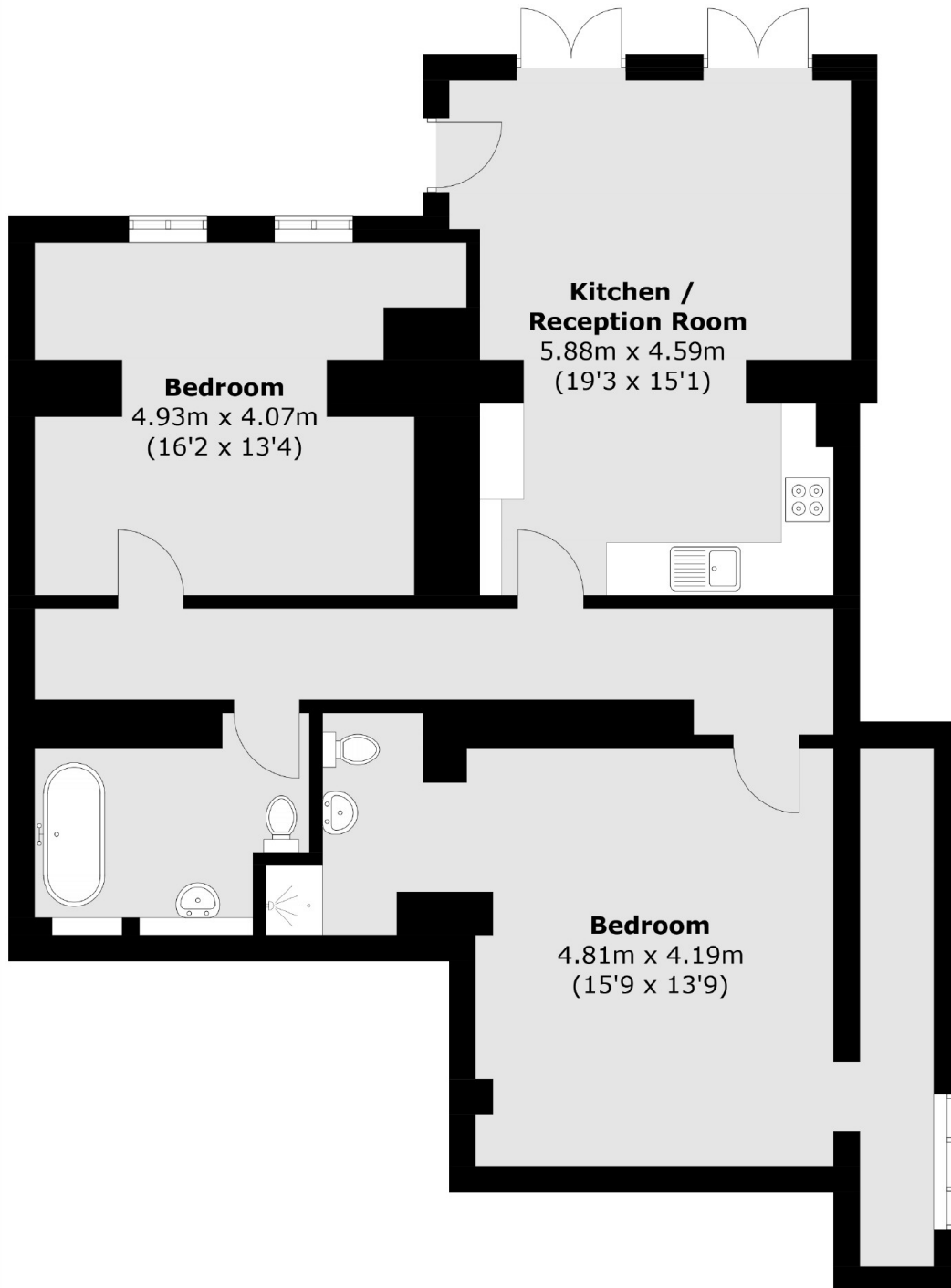
Beltwood Park Residences is a secure private development located conveniently for Duwich Woods, Sydenham Hill and Crystal Palace. The nearest stations would be Sydenham Hill and West Dulwich which offer frequent services into London Victoria.

Features

- Two Double Bedrooms
- Two Bathrooms
- Communal Spa
- Communal Sauna
- Communal Steam Room
- Communal Gym



Sydenham Hill,
London, SE26



Total area (approx.): 99.9 sq. m (1069.9 sq. ft)