



## Burford Road, SE6

£1,400 Per calendar month

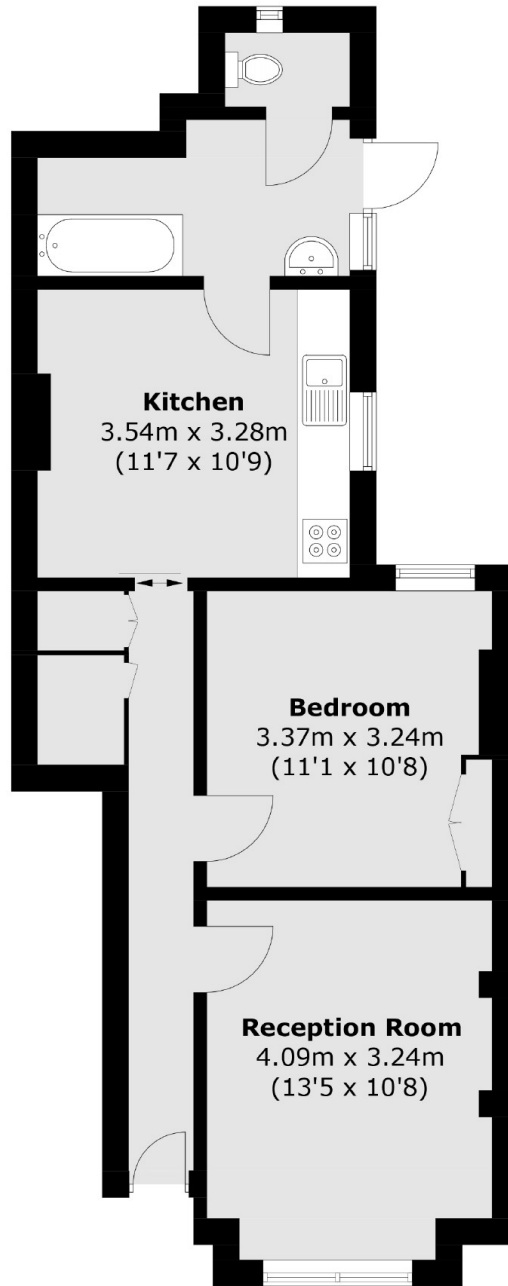
A one bedroom ground floor apartment with private garden situated on a quiet road in Catford

Burford Road is located near Catford or Catford Bridge stations, allowing quick and easy access into central London and the City.

### Features

- Ground Floor Flat
- One Double Bedroom
- Period Conversion
- Separate Kitchen
- Private Garden
- Close to Stations

Burford Road,  
London, SE6



## Ground Floor

Total area (approx.): 52.0 sq. m (559.7 sq. ft)