



Brockley Grove, SE4

£750,000

This three bedroom house with a south facing garden is well-presented throughout and is conveniently located for Crofton Park or Honor Oak Park stations as well as schools.

Brockley Grove is located close to Crofton Park station from where there are direct links into Blackfriars, Victoria and St Pancras. In addition, Honor Oak Park, Ladywell and Brockley stations are all within easy reach for services into London Bridge and Charing Cross as well as Overground services northbound to Shoreditch and Highbury and Islington

Features

- Three Bedrooms
- End Of Terrace
- Open Plan
- Off Street Parking
- South Facing Garden
- Close to Stations

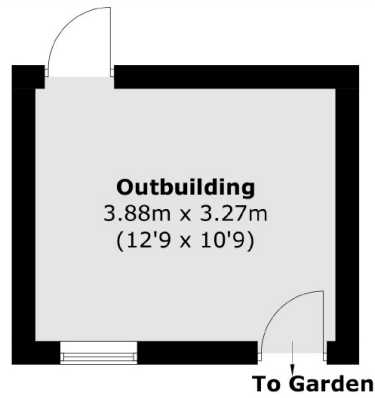


Brockley Grove, SE4

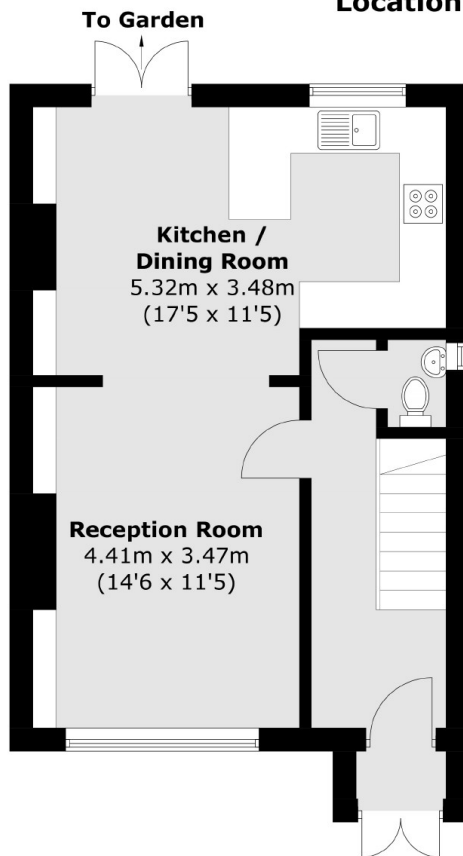
The front door is approached through a gated driveway which then opens into a spacious entrance hall with a separate w.c. To the left is a generous open plan living, kitchen and diner, with doors leading out to the south facing garden. The garden benefits from side access as well as an outbuilding. The first floor has two large double bedrooms and a further bedroom, these are served by a three piece family bathroom. The property has potential to extend (STPP)



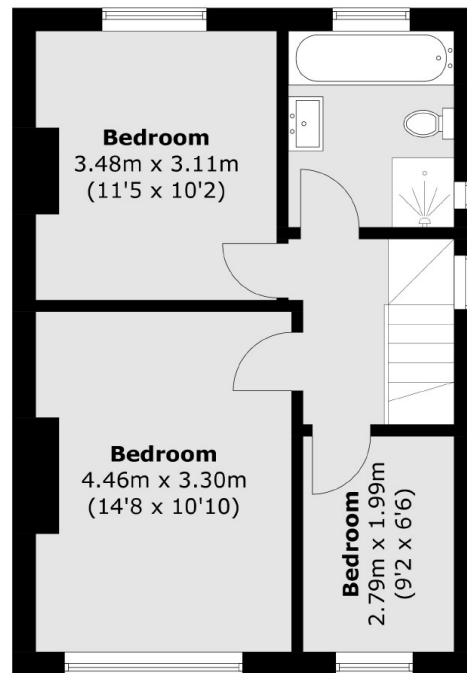
Brockley Grove, London, SE4



(Not Shown In Actual
Location / Orientation)



Ground Floor



First Floor

Total area (approx.): 87.6 sq. m (942.8 sq. ft)
Outbuilding (approx.): 12.9 sq. m (138.8 sq. ft)