



## Manwood Road, SE4

£800,000

Measuring over 127 sq m, this five bedroom period house, arranged over three levels is conveniently located for good schools, transport links, cafes and the green open spaces of Hilly Fields, Ladywell Fields and Blythe Hill Fields.

Manwood Road is situated between three 'Outstanding' rated primary schools. The nearest station is Crofton Park from where there are excellent links into Blackfriars, Victoria and St Pancras. In addition, Honor Oak Park, Ladywell and Brockley stations are all within easy reach for services into the City.

### Features

- Period Property
- Five Bedrooms
- Double Reception Room
- Kitchen/Diner
- Two Bathrooms
- Close to Stations



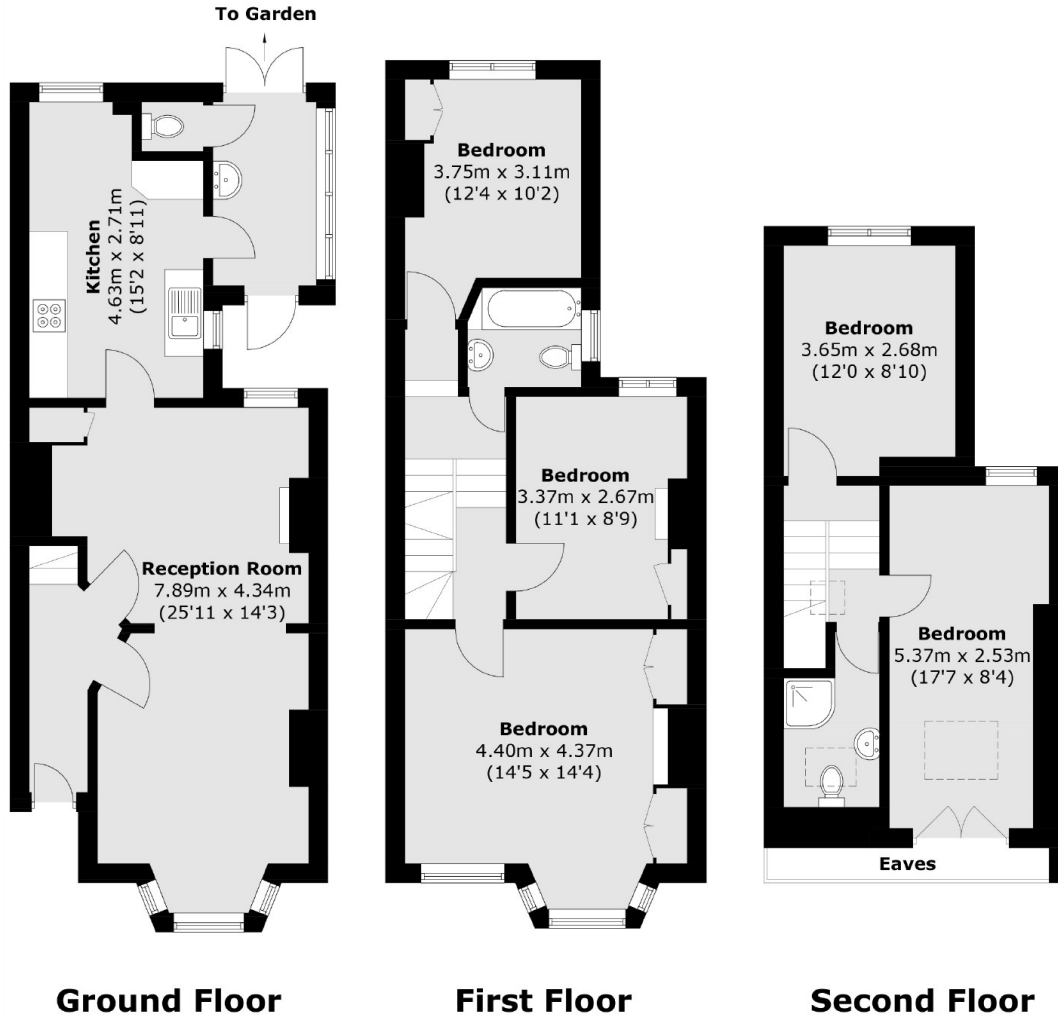
## Manwood Road, SE4

On the ground floor there is a double reception room. At the back is a large kitchen diner, a downstairs wc and access to the rear garden. On the first floor there are three bedrooms and a family bathroom. The loft has been converted and provides two further bedrooms and a shower room.





# Manwood Road, London, SE4



Total area (approx.): 127.2 sq. m (1369.1 sq. ft)  
(Excluding Eaves)