



Brockley View, SE23

£425,000

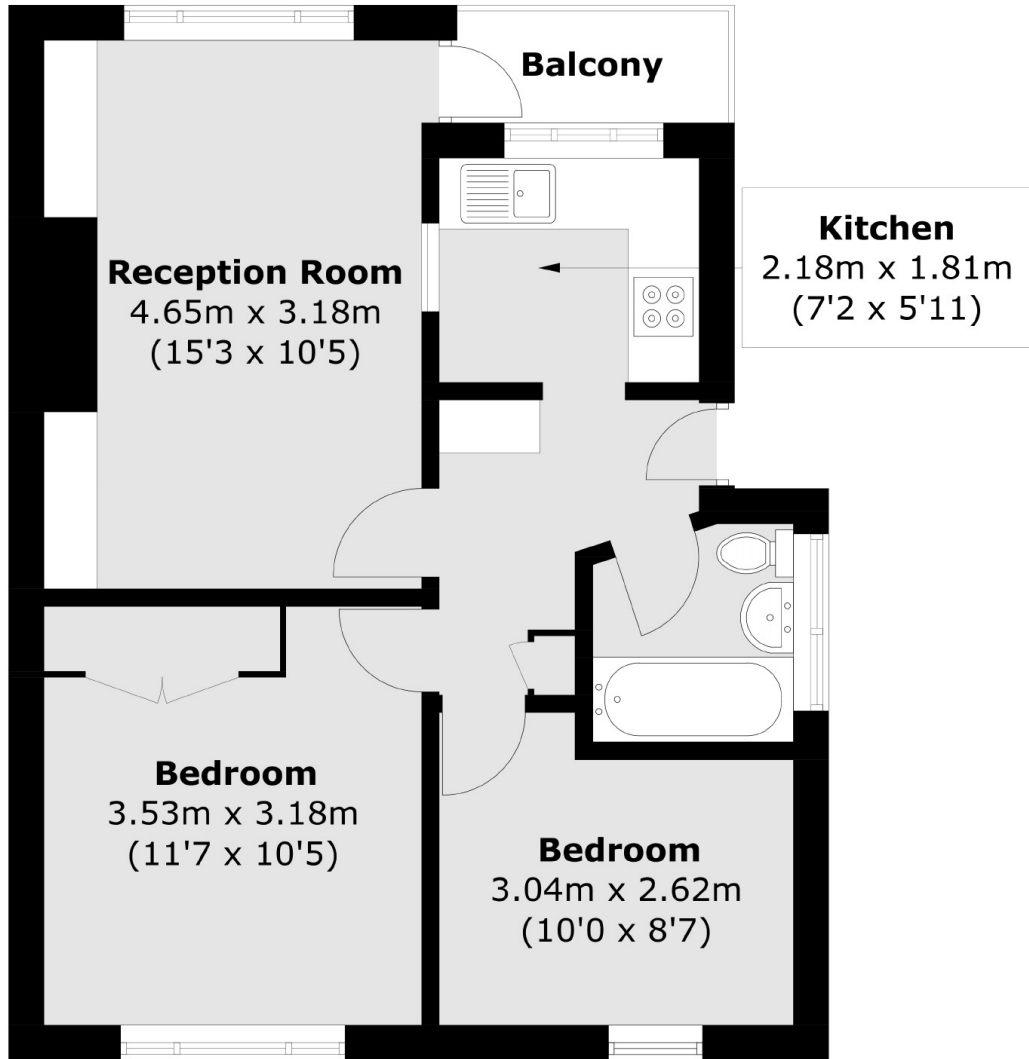
Located next to Blythe Hill Fields, this well-presented, two bedroom top floor maisonette with a private garden. It also features a good-sized living room, a separate modern fitted kitchen, two bedrooms, a family bathroom and off street parking.

Honor Oak Park for mainline services to London Bridge as well as London Overground services towards Shoreditch and Highbury and Islington; Catford and Catford Bridge for services to Blackfriars and Victoria.

Features

- Two Bedrooms
- Maisonette
- Private Garden
- Off-Street Parking
- Share of Freehold
- Close to Stations

Brockley View, London, SE23



Total area (approx.): 47.6 sq. m (512.4 sq. ft)
Balcony: 2.2 sq. m (23.7 sq. ft)