



Chestnut Grove, SE20

£500,000

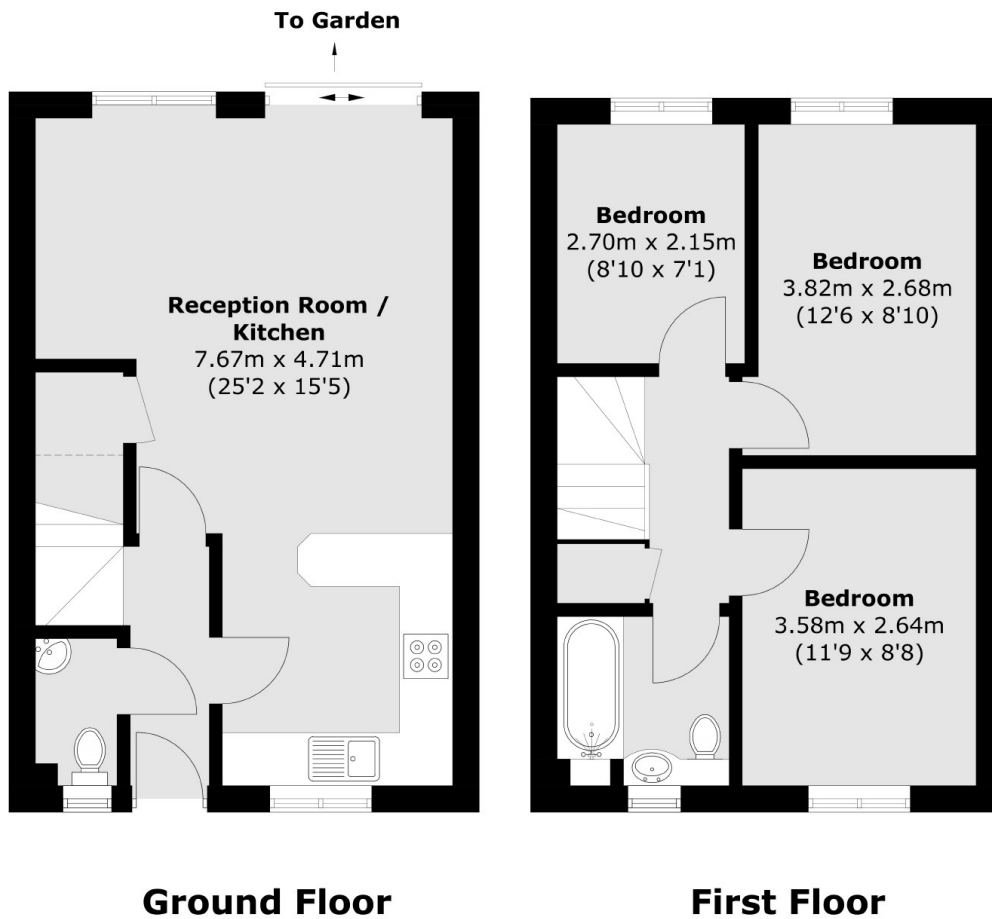
A modern build three bedroom family house located in a quiet residential road benefits from a large open plan kitchen reception room, south east facing private garden and off street parking. On the first floor are three bedrooms and a family bathroom.

Chestnut Grove boasts a superb location amid numerous green spaces with Crystal Palace Park, Bett's Park and South Norwood Lake & Grounds within reach. It offers a range of excellent amenities and access to Anerly and Penge East stations.

Features

Modern Build
Three Bedrooms
Open Plan Living
Off Street Parking
Private Garden
Close To Stations

Chestnut Grove,
London, SE20



Total area (approx.): 71.4 sq. m (768.6 sq. ft)