



Firs Close, SE23

£475,000

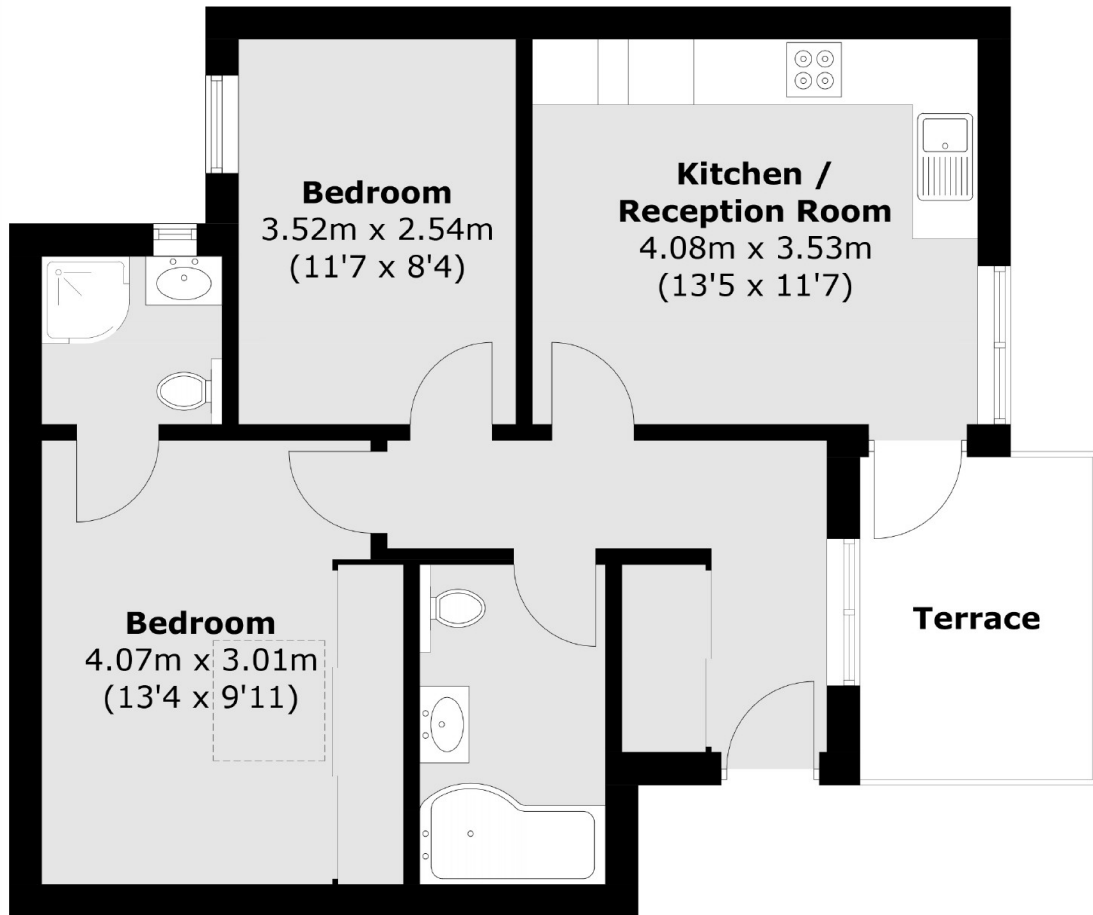
Immaculately presented throughout is this two bedroom, first floor flat forming part of a small gated development. The property boasts of an open plan reception kitchen which leads out onto a private terrace. Two bedrooms, one with an en-suite and a separate family bathroom. The property has underfloor heating throughout the flat and ample storage space.

Firs Close is a quiet cul-de-sac situated within easy reach of Honor Oak Park station allowing quick and easy access into central London (via mainline services) and Highbury and Islington via the London Overground.

Features

- Secure Gated Development
- Modern Finish Throughout
- Two Bedrooms
- Private Terrace
- 10 Year Build Warranty
- Close to Transport Links

Firs Close,
London, SE23



Total area (approx.): 54.8 sq. m (589.9 sq. ft)
Terrace area (approx.): 6.3 sq. m (67.8 sq. ft)