



Garthorne Road, SE23

£850,000

In need of modernisation and boasting a west-facing garden, an ideal location for transport links and primary schools, this three bedroom, two bathroom house would make a great family home.

Garthorne Road is close to Honor Oak Park station which provides fast and frequent services to London Bridge as well as Overground services northwards to Shoreditch and Highbury and Islington. You can change at Canada Water for easy access to Canary Wharf.

Features

- Three Bedrooms
- Two Receptions
- Period Family Home
- Needs Modernisation
- West Facing Garden
- Close to Station

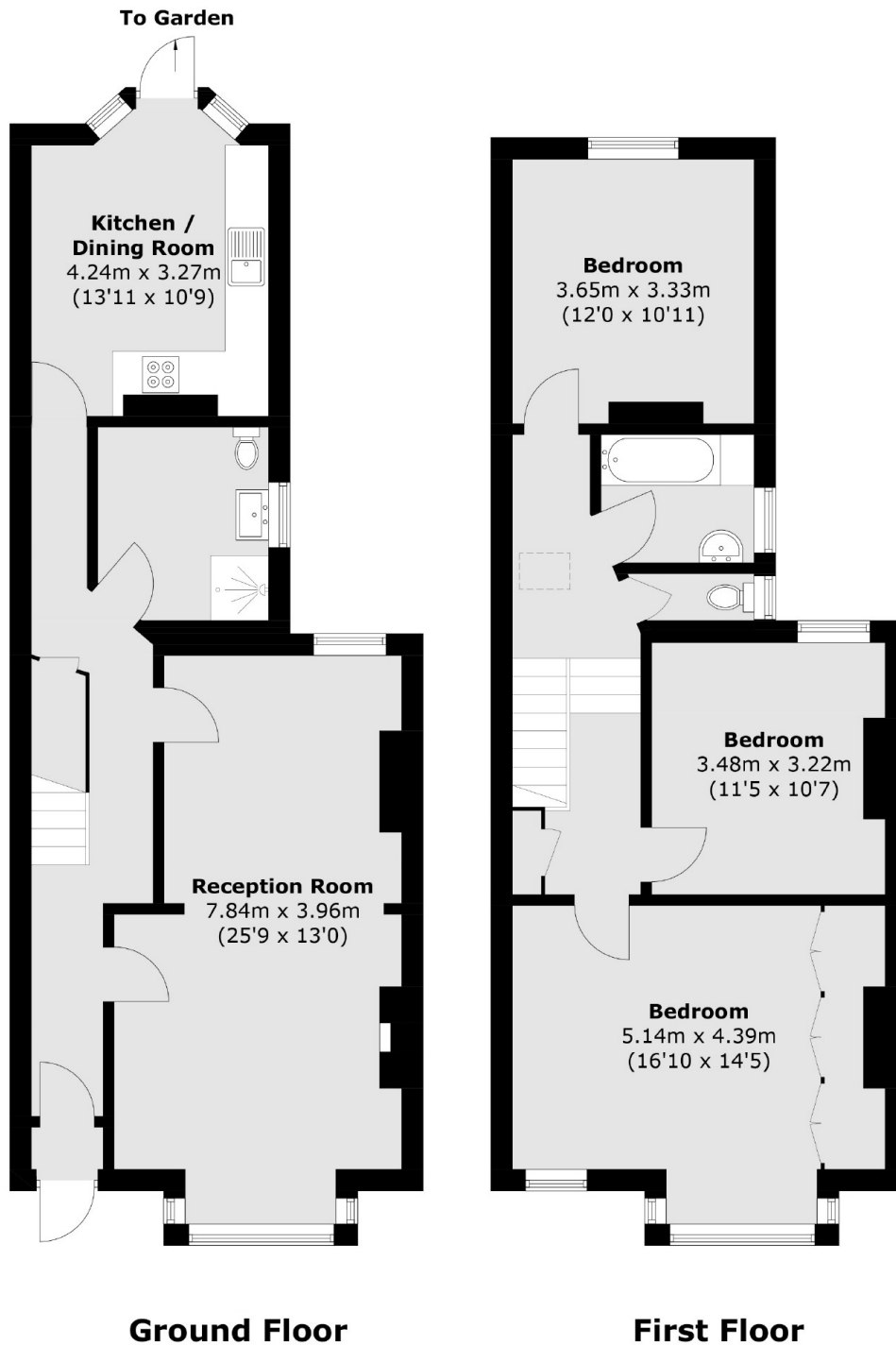


Garthorne Road, SE23

As you enter the property, the bay fronted living room is light and bright with period coving opens out into the dinning room. To the rear is a family bathroom and a large kitchen/dinner with doors opening onto the west-facing garden. Upstairs, on the first floor, is a bay fronted large bedroom with built in wardrobes, a further two double bedrooms and a family bathroom with a separate WC.



Garthorne Road,
London, SE23



Total area (approx.): 122.8 sq. m (1,321.8 sq. ft)