



## Buckthorne Road, SE4

£800,000

Ideally placed for transport links and local primary schools, this lovely, three bedroom, two reception period house would make a great family home.

Buckthorne Road is a popular residential road which is conveniently located for Crofton Park and Honor Oak Park train stations. For families, there is a fantastic selection of local schools including Stillness and Beecroft. The great parks, independent cafes, shops and restaurants of Crofton Park and Honor Oak Park are located close by and Nunhead and Peckham Rye are an easy walk.

### Features

- Three Bedrooms
- Two Receptions
- Period Property
- Separate Fitted Kitchen
- Secluded Garden
- Close to Stations



## Buckthorne Road, SE4

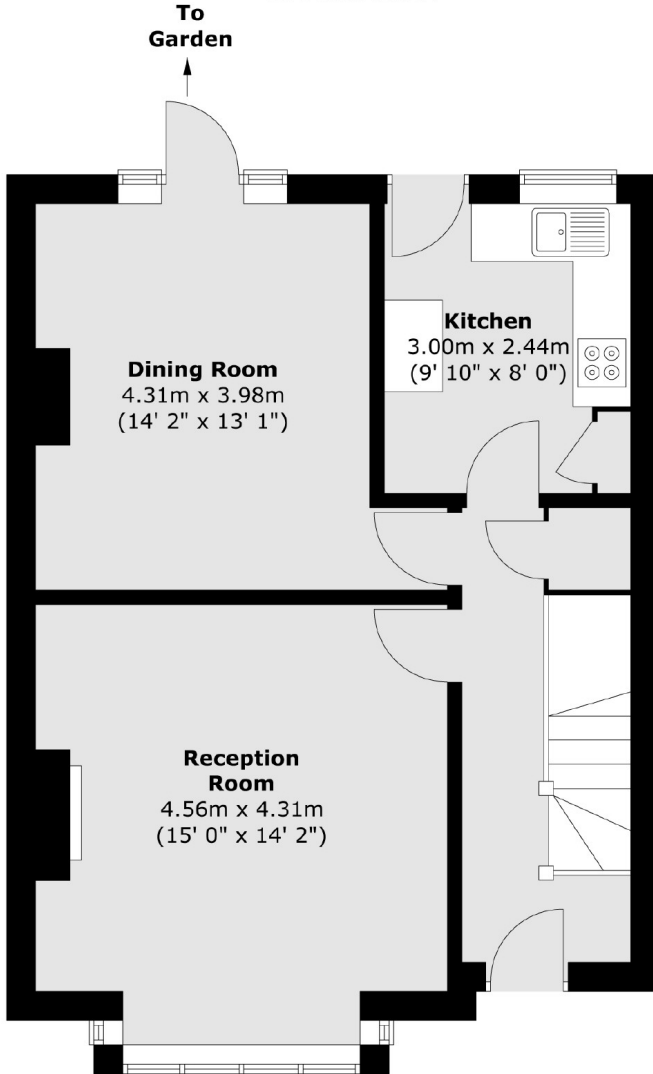
The front door is approached through a small front garden which then opens into a spacious entrance hall with under stairs storage. To the left is a generous living room with a square bay window and feature fire place. To the rear is a dining room and a separate galley style kitchen with doors leading out to the garden, The first floor has two large double bedrooms and a further bedroom, these are served by a three piece family bathroom.



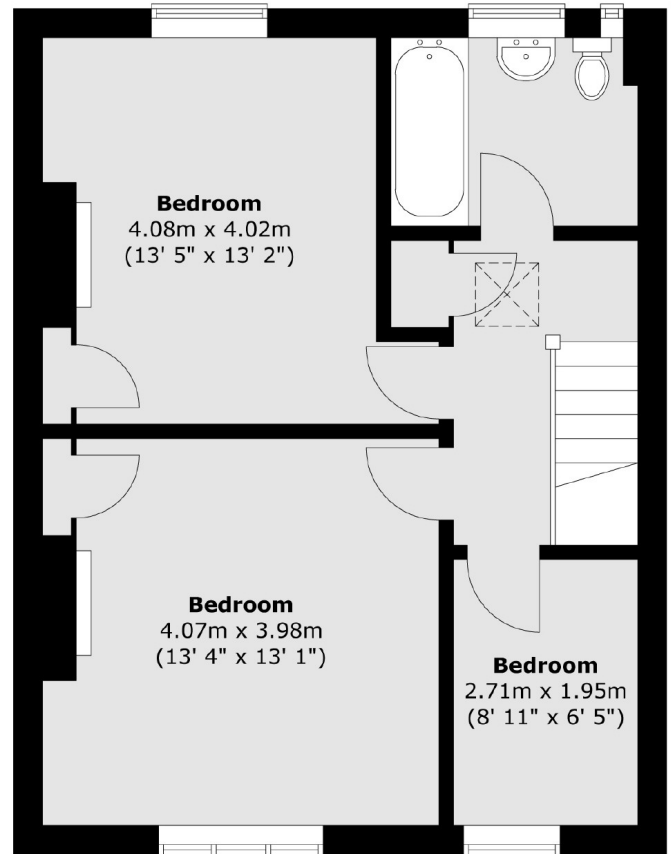


# Buckthorne Road, London, SE4

## Ground Floor



## First Floor



Total area (approx.) : 101.5 sq. m (1092 sq. ft)