



## Netherby Road, SE23

£350,000

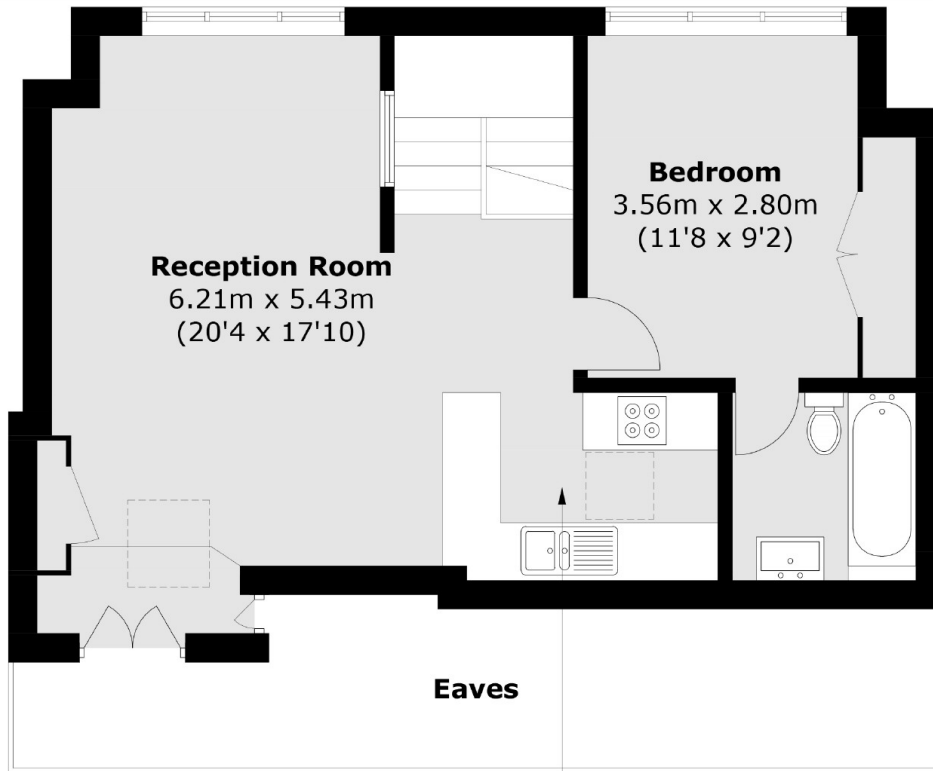
This one bedroom top floor flat is part of a substantial Edwardian-style house in a sought after residential road on the borders of East Dulwich and Honor Oak Park. It boasts a light and airy living room opening up into a modern kitchen, bedroom, a stylish bathroom and a communal garden at the rear.

Netherby Road is nearby to Honor Oak Park station which provides great links to London Bridge as well as London Overground services northwards to Shoreditch and Highbury and Islington.

### Features

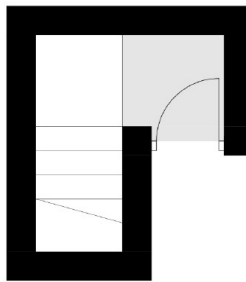
- One Bedroom
- Period Conversion
- Open Plan
- Communal Gardens
- Share Of Freehold
- Close To Station

Netherby Road,  
London, SE23



**Kitchen**  
2.58m x 1.94m  
(8'6 x 6'4)

### Third Floor



### Second Floor

Total area (approx.): 53.9 sq. m (580.2 sq. ft)  
(Excluding Eaves)

**Dexters**

Honor Oak  
61 Honor Oak Park  
London  
SE23 1EA  
Sales  
020 8291 9556

Energy Rating: C. We aim to make our particulars both accurate and reliable. However they are not guaranteed; nor do they form part of an offer or contract. If you require clarification on any points then please contact us, especially if you're traveling some distance to view. Please note that appliances and heating systems have not been tested and therefore no warranties can be given as to their good working order.

 **RICS** | Regulated  
Estate Agent  
and Letting Agent

dexters.co.uk