



Sydenham Park Road, SE26

£2,250 Per calendar month

Three bedroom house offering a separate reception and dining room, with modern kitchen leading on to private garden. Perfect for a family.

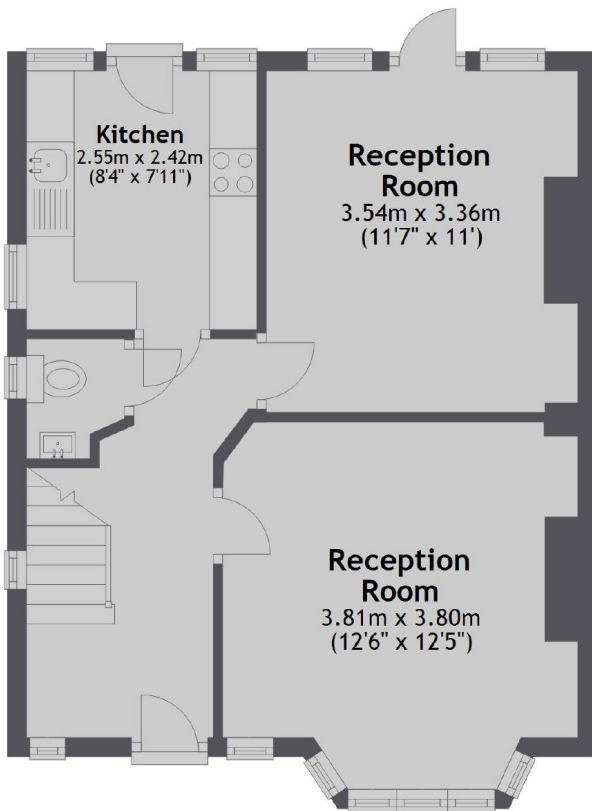
Located between Sydenham and Forest Hill Train station, popular for professionals or families looking for an easy commute.

Features

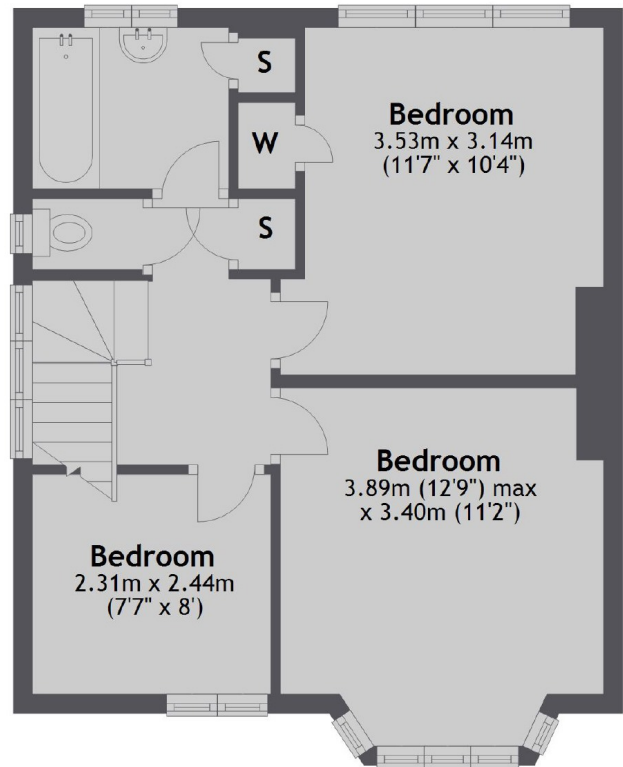
Three Bedrooms
Semi Detached
Two Receptions
Separate Kitchen Rear 60"
Garden
Off Street Parking

Sydenham Park Road,
London, SE26

Ground Floor



First Floor



Total area: approx. 84.1 sq. metres (905.5 sq. feet)