



Honor Oak Park, SE23

£2,250 Per calendar month

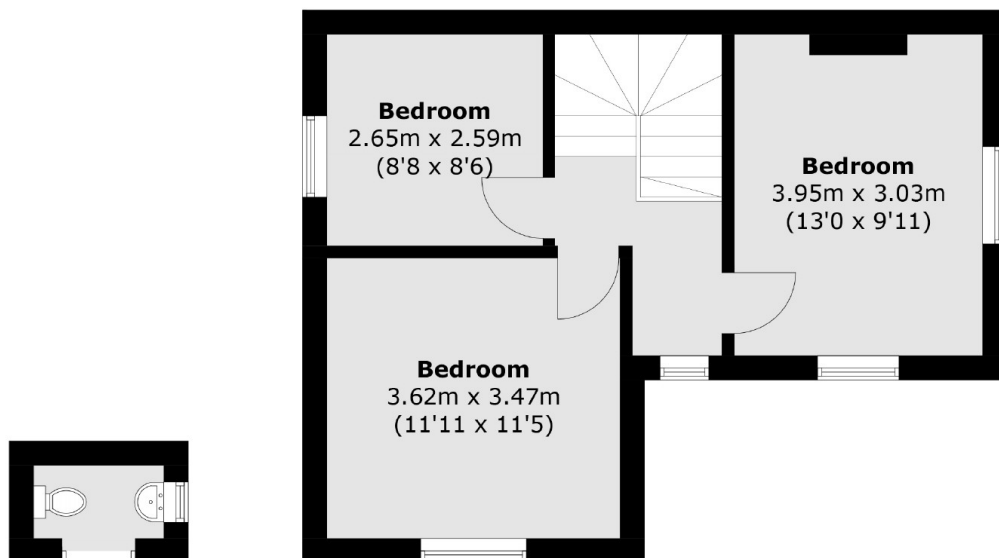
A three bedroom semi detached house located close to Honor Oak Park Station.

Honor Oak Park station is a short walk away and offers regular services into London Bridge as well as Overground services northwards to Shoreditch and Highbury and Islington, and southwards to Croydon.

Features

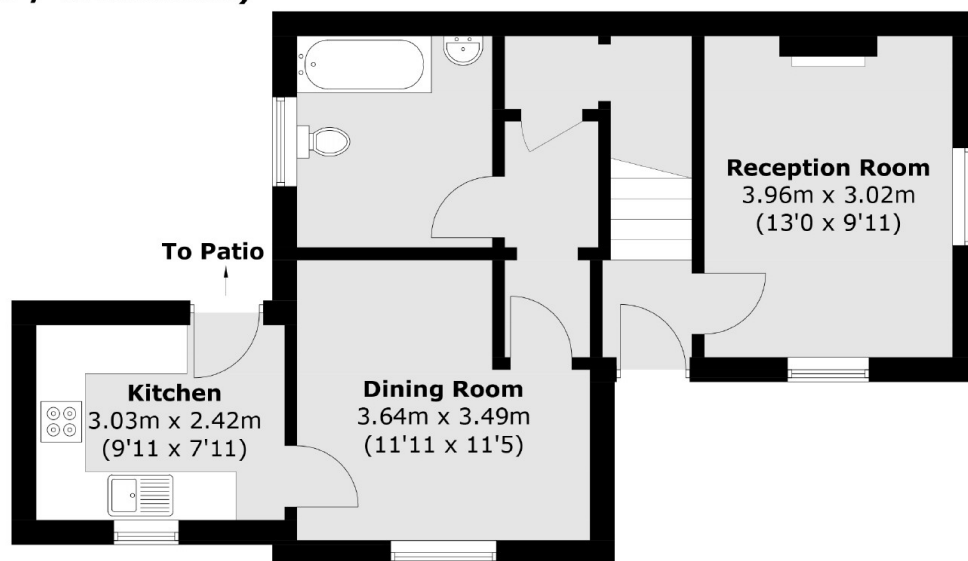
- Three Bedrooms
- Semi Detached
- Two Reception Rooms
- Separate Kitchen
- Garden
- Close to Station

Honor Oak Park, , SE23



(Not Shown In Actual
Location / Orientation)

First Floor



Ground Floor

Total area (approx.): 87.7 sq. m (944.0 sq. ft)
External WC: 1.6 sq. m (17.2 sq. ft)