



## Rushford Road, SE4

£850,000

Located on a quiet, residential street and arranged over three floors, is this well-presented, four bedroom, two bathroom period home with South West facing garden.

Rushford Road is a popular residential Road and has convenient access to Crofton Park, Catford and Catford Bridge train stations. The amenities of both Crofton Park and Brockley Road are close by and there are a number of Ofsted 'Outstanding' Schools locally including Stillness.

### Features

- Four Bedrooms
- Two Bathrooms
- Victorian Terraced Home
- Stylish Fitted Kitchen
- South West Facing Garden
- Close to Stations



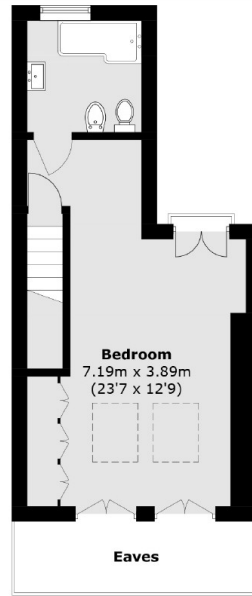
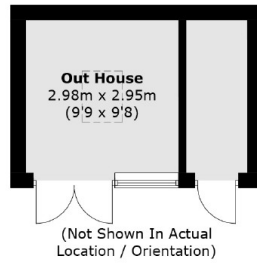
## Rushford Road, SE4

As you enter the property, the bay fronted living room has a warm and contemporary feel. To the rear is a dining room with an exposed brick fire place, which leads into the separate kitchen. The galley style kitchen is fitted with stylish units and integrated oven, hob and extractor fan. Doors opening out to the south east facing garden. Upstairs, on the first floor, is a bay fronted large bedroom with built in wardrobes, a further two double bedrooms and a modern bathroom with plenty of storage. The loft has been extended to create a large principle bedroom and a further modern shower room. The garden is paved with a outbuilding at the end of the garden which can be used as an office or storage.

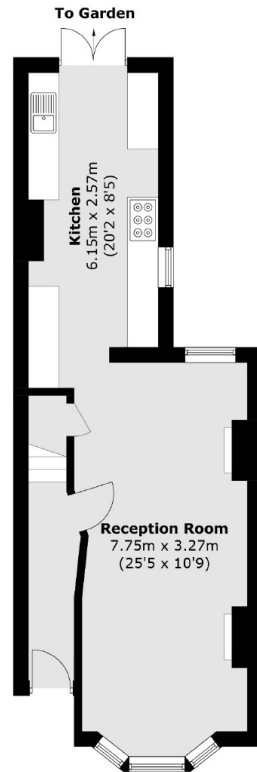




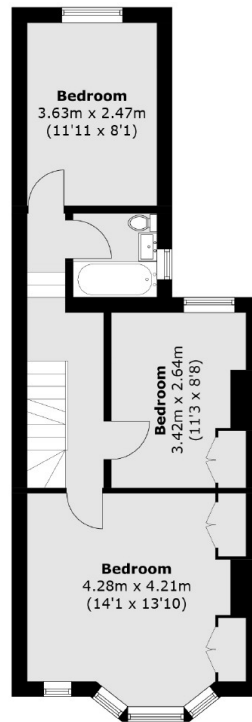
# Rushford Road, London, SE4



**Second Floor**



**Ground Floor**



**First Floor**

Total area (approx.): 124.0 sq. m (1,335.1 sq. ft)  
Out House: 13.4 sq. m (144.2 sq. ft)  
(Excluding Eaves)