



Liphook Crescent, SE23
£1,150,000

Dexters



Liphook Crescent, SE23

Located close to Hormiman Museum and Gardens is this charming, four bedroom, two reception semi detached house with off street parking and fantastic views from the private balcony.

It comprises, on the ground floor, a bright and airy living room with doors opening onto the open plan kitchen and dining room, which overlooks the rear garden. The stylish fitted kitchen has some integrated appliances. There is also a separate wc and a double bedroom with en suite shower room.

Upstairs there are two double bedrooms; the main bedroom has a balcony overlooking the garden, and views towards London. There is a further single bedroom and a family bathroom with a 4 piece suite. The beautiful garden is mainly laid to lawn with a patio area and various plants and shrubs to the borders.

Liphook Crescent is a quiet residential road located between Forest Hill and Honor Oak Park. It has convenient access to both Forest Hill and Honor Oak Park train station's along with a number of Ofsted 'Outstanding' schools. The amenities of Forest Hill, Honor Oak and Dulwich are all within close proximity.

Features

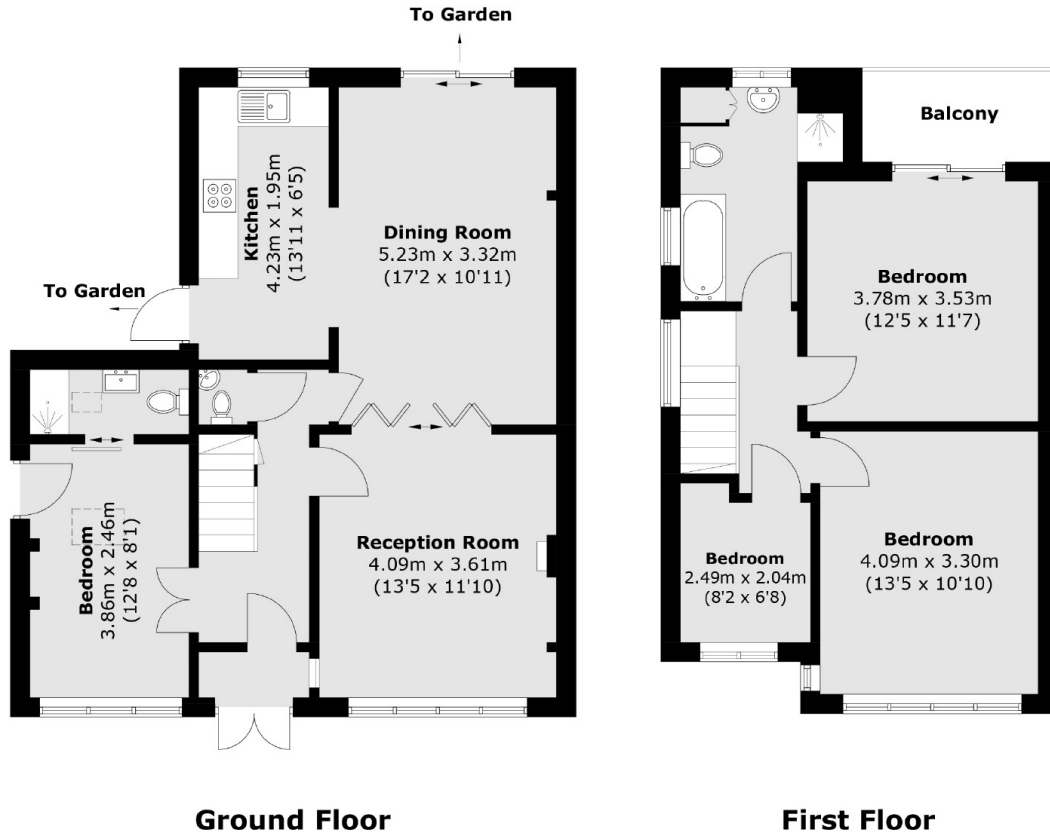
- Semi Detached Home
- Four Bedrooms
- Two Bathrooms
- Off Street Parking
- Amazing Views
- Close to Station







Liphook Crescent, London, SE23



Total area (approx.): 110.8 sq. m (1,192.6 sq. ft)
Balcony : 4.1 sq. m (44.1 sq. ft)