



Ebsworth Street, SE23

£800,000

This three bedroom Victorian period half house is beautifully presented throughout and is located in the heart of Honor Oak Park, close to the amenities along the high street, station and outstanding local schools.

Ebsworth Street is a short walk to Honor Oak Park station which provides frequent services to London Bridge as well as Overground services northwards to Shoreditch and Highbury and Islington. You can change at Canada Water for easy access to Canary Wharf.

Features

- Victorian Half House
- Three Bedrooms
- Two Bathrooms
- Period Features
- Separate Fitted Kitchen
- Close to Station

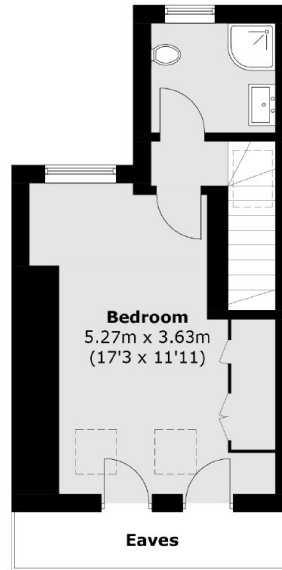


Ebsworth Street, SE23

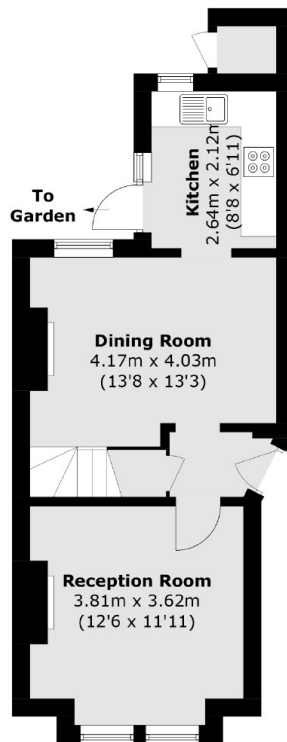
As you enter the property, the front room has a warm and welcoming feel with built in shelves either side of the feature fireplace and double-glazed windows that allow natural light to stream in. Behind this is a dining area that leads through to a smart fitted kitchen and doors leading to the garden. On the first floor, there are two bedrooms and a stylish family bathroom. The loft has been converted to add a principal bedroom with a shower room. The garden is mainly laid to lawn with various plants and shrubs to the borders.



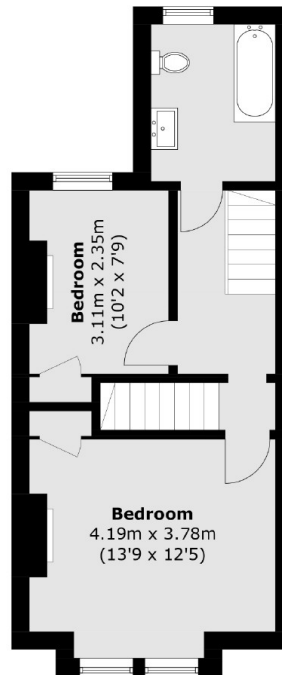
Ebsworth Street,
London, SE23



Second Floor



Ground Floor



First Floor

Total area (approx.): 99.5 sq. m (1,071 sq. ft)
(Excluding Eaves)