



Salehurst Road, SE4
£875,000

Dexters



Salehurst Road, SE4

A substantial, semi-detached family home measuring 1,738 sq ft with a large west facing private garden. There is lots of versatile accommodation including 4/5 bedrooms, a study, a large open plan kitchen dining area, a double reception room and a sun room.

A path leads through a low maintenance front garden to the front door which opens into a generous entrance hall, off this is a study and a bright, dual aspect, double reception room with feature fireplaces. There is a sun room off the living room which has stairs leading down to the kitchen. The spacious and modern kitchen/diner has plenty of storage space and a range of fitted appliances. There is also a bedroom/further reception room and a bathroom on this floor. The first floor has three bedrooms, two of which are large doubles and all have use of a three piece family bathroom with a shower over the bath. The loft has been converted to create a fantastic primary bedroom with fitted wardrobes, a modern shower room and a balcony with amazing views across London. To the rear of the property is a large west facing garden which has a lovely patio area and the rest is lawned.

Salehurst Road is a popular residential Road and has convenient access to Crofton Park, Honor Oak, Catford and Catford Bridge train stations. The amenities of both Crofton Park, Brockley Road and Honor Oak are close by and there are a number of Ofsted 'Outstanding' Schools.

Features

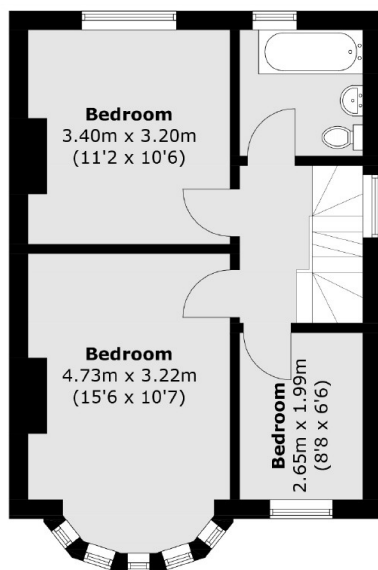
- Five Bedrooms
- Semi-Detached
- Large Private Garden
- Close To Transport
- 1,738 Sq Ft
- Freehold



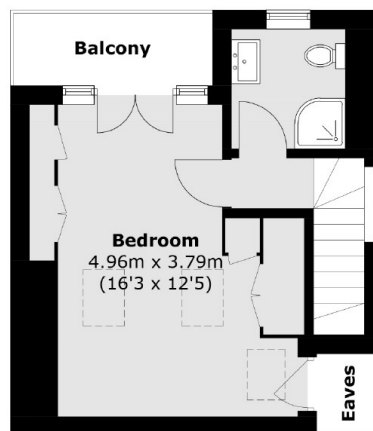




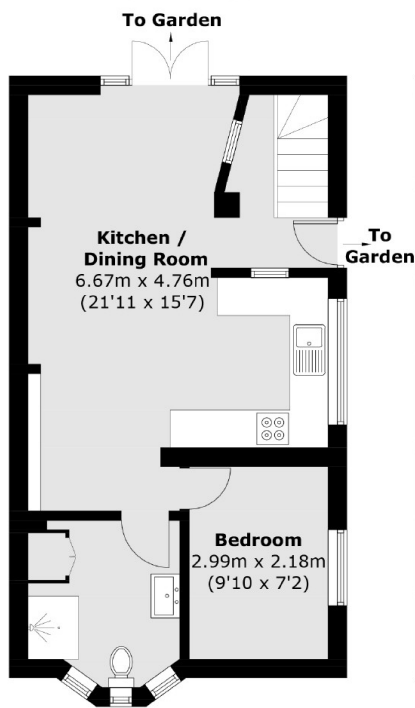
Salehurst Road, London, SE4



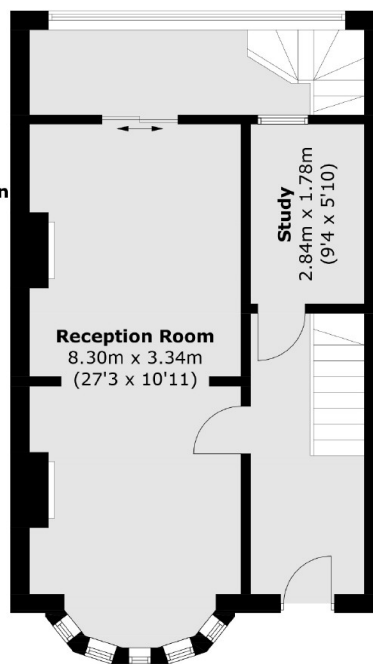
First Floor



Second Floor



Lower Ground Floor



Upper Ground Floor

Total area (approx.): 161.5 sq. m (1,738.4 sq. ft)

(Excluding Eaves)

Balcony area (approx.): 3.6 sq. m (38.7 sq. ft)