



Eddystone Road, SE4

£750,000

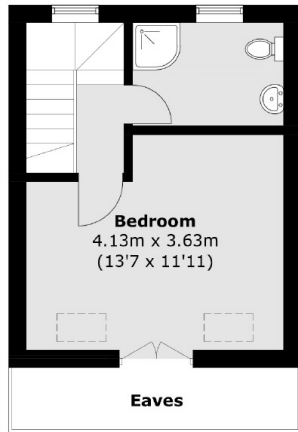
A three storey terraced Edwardian offering a combined 1623 sq ft. There are four double bedrooms, two reception rooms and a bathroom on both the first and second floor. A low maintenance rear garden completes the house.

Eddystone Road is conveniently located for Crofton Park, Brockley and Ladywell train stations and the open spaces of Blythe Hill, Hilly Fields, Brockwell and Ladywell Cemetery. The great independent cafés and shops of Crofton Park are located at the top of the road. There are also plenty of options for Ofsted 'Outstanding' schools in the local area.

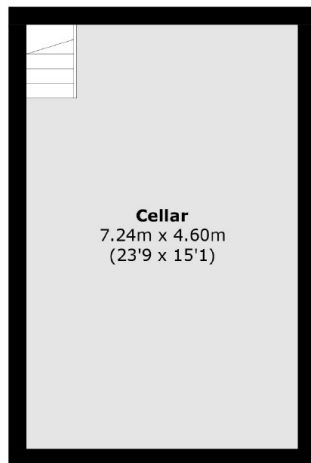
Features

- Four Double Bedrooms
- Two Reception Rooms
- Edwardian
- Converted Loft
- Low Maintenance Garden
- Further Potential To Extend

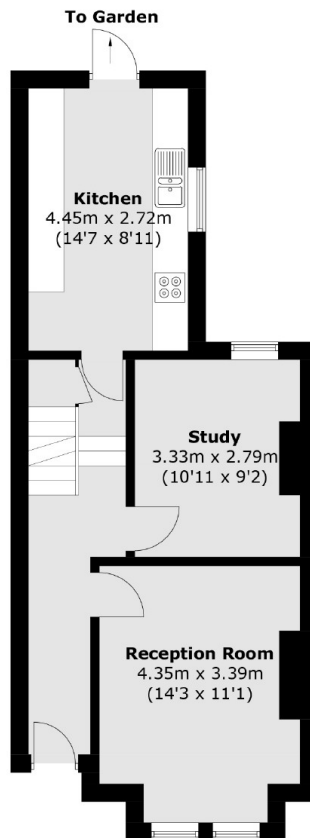
Eddystone Road,
London, SE4



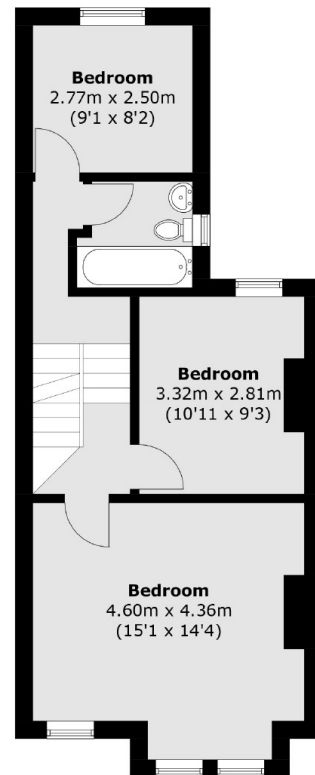
Second Floor



Cellar



Ground Floor



First Floor

Total area (approx.): 150.8 sq. m (1,623.2 sq. ft)
(Including Cellar & Excluding Eaves)