



Palace Square, SE19

£450,000

A two-bedroom first floor Victorian conversion flat with a large bright reception room with period features, a good size kitchen, a double and single bedroom and a family bathroom. The property has direct access to a balcony and communal gardens.

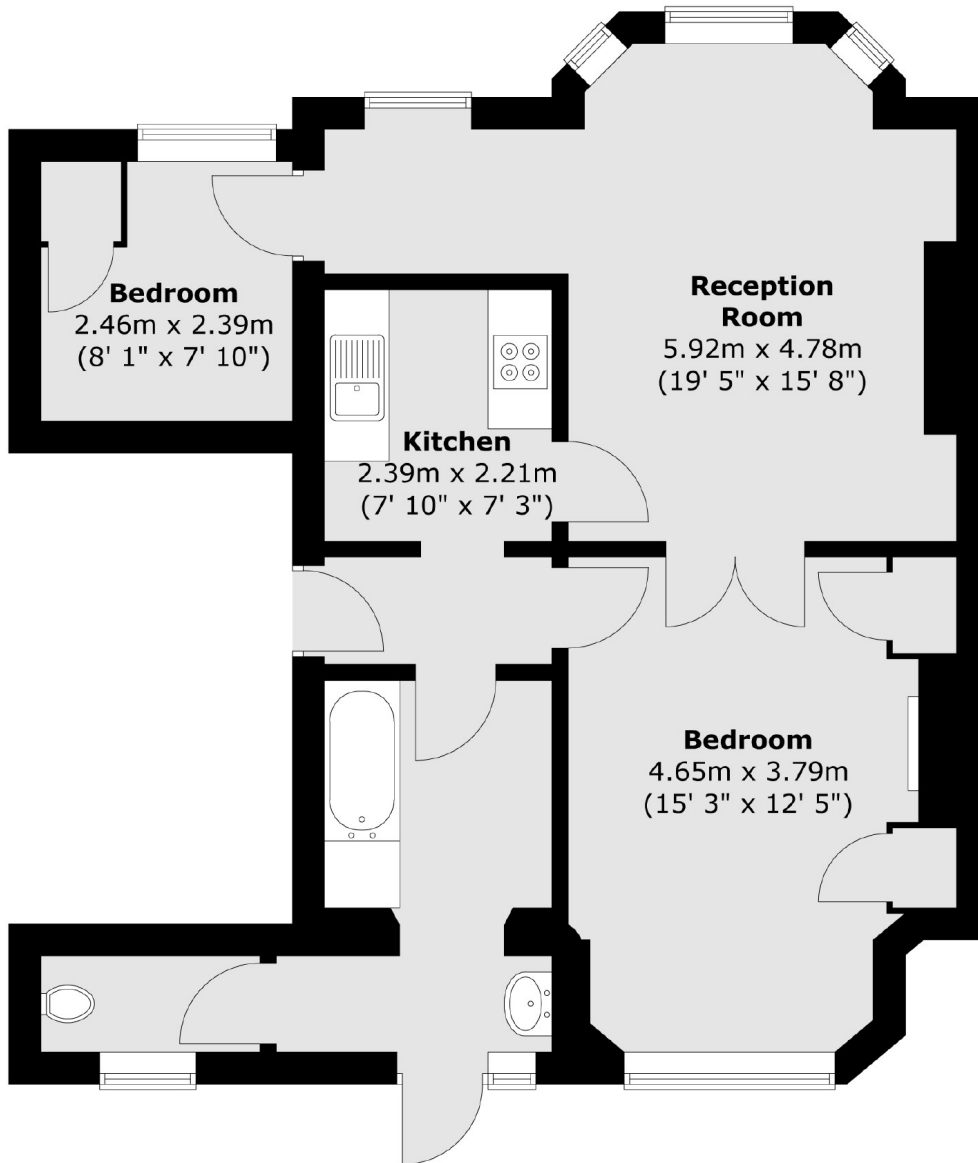
Palace Square is located in the heart of Crystal Palace, just moments from an array of vibrant shops, bars, restaurants and cafes. Numerous regular bus routes provide excellent connections to the surrounding area, with nearby Crystal Palace station offering good links into Central London. The famous site of Crystal Palace Park is also just a short distance away, with lake, children's zoo and dinosaur trail.

Features

- Two Bedrooms
- First Floor Flat
- Private Balcony
- Communal Gardens
- Great Transport Links
- Close To Park

Palace Square,
London, SE19

First Floor



Total area (approx.) : 63.1 sq. m (679 sq. ft)