



Ewart Road, SE23  
£1,100,000

**Dexters**



## Ewart Road, SE23

Originally built as the personal residence of the master builder for the Victorian houses around the area, this four-bedroom double fronted detached residence situated on a quiet residential road is an ideal family home. The house offers a generous living space exceeding 1,600 sq ft, blending period features with contemporary styling. It has a fantastic open plan L-shaped kitchen/living room with a spacious dining area, a large well maintained lawned garden, and off-street parking.

The front door is surrounded by a mature passion flower and approached through a low-maintenance front garden with off-street parking. It opens into the entrance hall leading to a large 39 ft reception room. The focal points of the room are the unique period details, from the original Aga-type oven set into the wall and a pristine period fireplace (both feature pieces, and not in use). The space has a cosy living area with oak flooring throughout and light streaming through the large window and French windows. The living room flows into a modern kitchen/diner with velux roof windows, direct access and views out to the patio, and a peaceful garden making it an ideally space for al fresco dining and entertaining guests. The house has double glazed sash windows to the front, original cornices and picture rails and original fireplaces throughout. The downstairs also features a useful WC/utility room with space for a washing machine and tumble dryer. Tucked behind the kitchen is an additional room which is ideal for a home office or workshop with a lovely outlook onto the garden. There is a fourth bedroom on the

- Detached
- Four Bedrooms
- Large Garden
- Potential To Extend
- Close To Transport
- Open Plan Kitchen/Diner





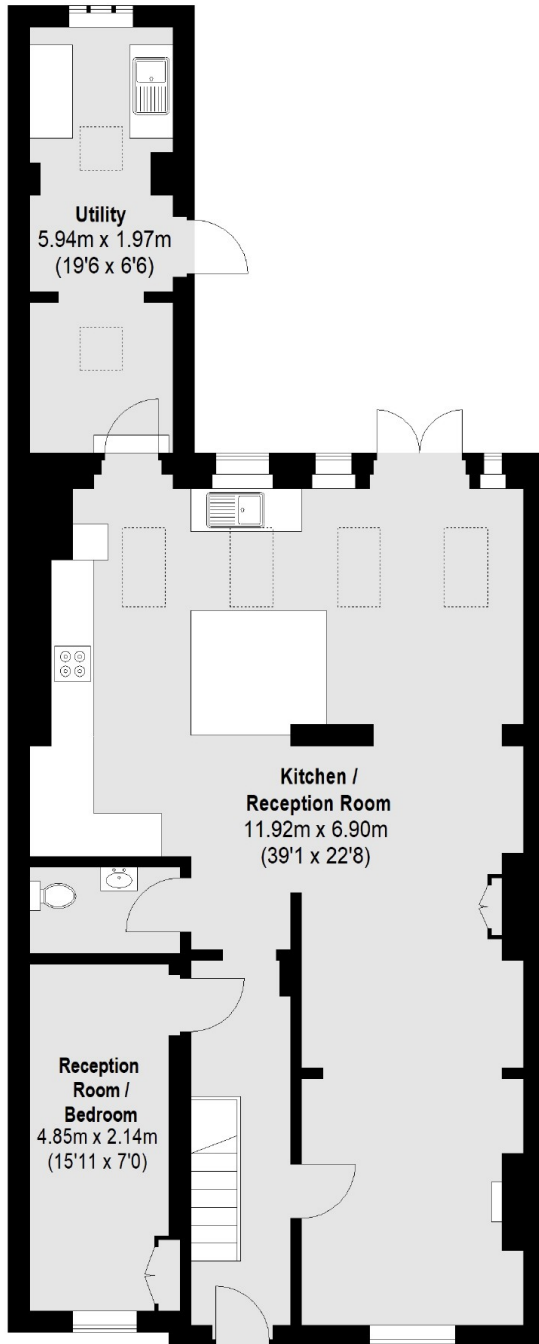




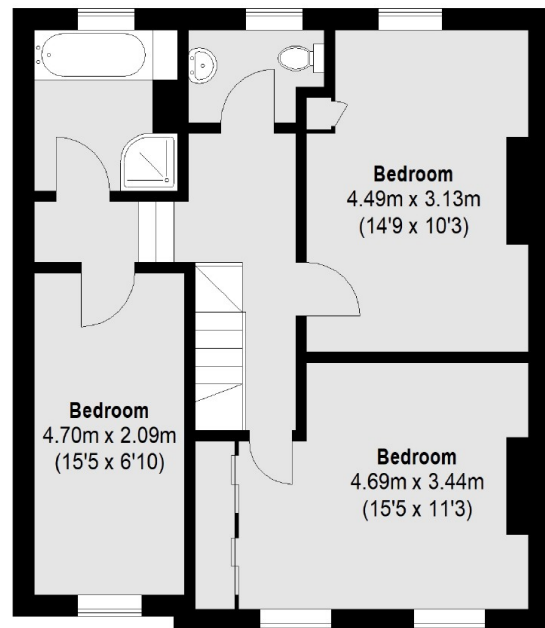




Ewart Road,  
London, SE23



Ground Floor



First Floor

Total area (approx.): 150.2 sq. m (1617 sq. ft)