



Ravensbourne Road, SE6 £350,000

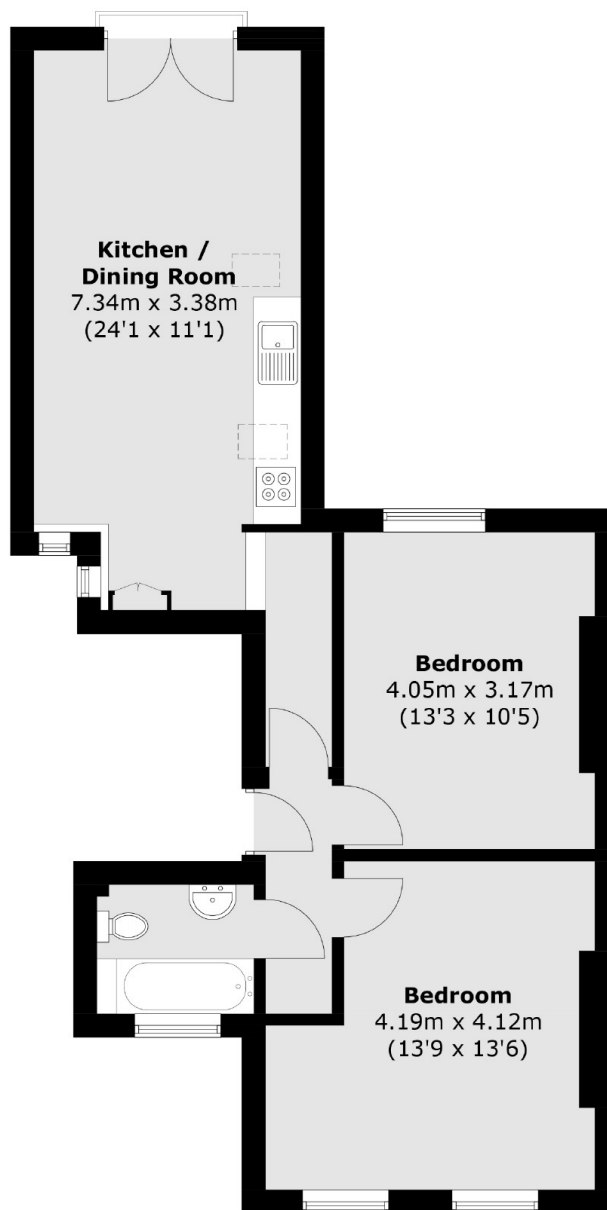
"O.I.E.O £350,000" A two-bedroom first floor Victorian conversion flat with a stylish fitted kitchen opening onto a lounge with a Juliet balcony, two good sized bedrooms and a family bathroom.

Ravensbourne Road is situated close to Blythe Hill Fields with the nearest stations being Catford and Catford Bridge with services into central London and the City.

Features

- Victorian Conversion
- First Floor
- Two Double Bedrooms
- Share Of Freehold
- Chain Free
- Close To Stations

Ravensbourne Road,
London, SE6



First Floor

Total area (approx.): 62.2 sq. m (669.5 sq. ft)

Dexters

Honor Oak
61 Honor Oak Park
London
SE23 1EA
Sales
020 8291 9556

Energy Rating: C. We aim to make our particulars both accurate and reliable. However they are not guaranteed; nor do they form part of an offer or contract. If you require clarification on any points then please contact us, especially if you're traveling some distance to view. Please note that appliances and heating systems have not been tested and therefore no warranties can be given as to their good working order.

 **RICS** | Regulated
Estate Agent
and Letting Agent

dexters.co.uk