



Ewhurst Road, SE4

£850,000

An impressive and unique, detached three bedroom home sat on a generous corner plot offering plenty of potential to extend STPP. There is off street parking and plenty of storage throughout.

Ewhurst Road is a popular residential road located in Crofton Park and the house is positioned in a quiet cul-de-sac with access to Ladywell Fields. Crofton Park and Ladywell train stations are within close proximity, which gives convenient transport links into London and there are plenty of great schools close by including Prendergast, Ladywell and Stillness.

Features

- Detached
- Three Bedrooms
- Off Street Parking
- Potential To Extend STPP
- Quiet Residential Road
- Close To Transport



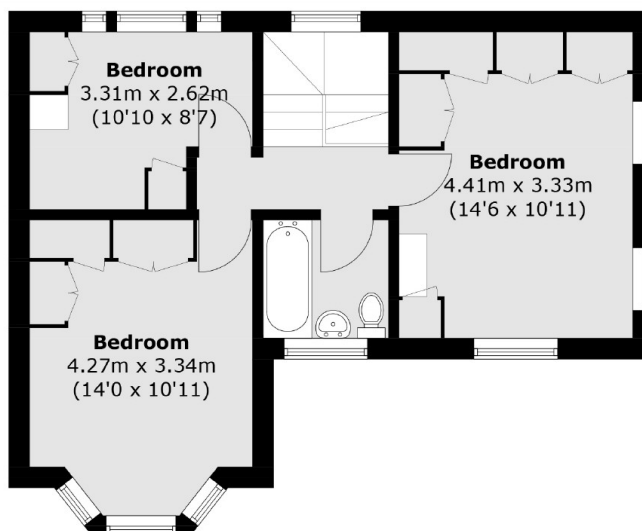
Ewhurst Road, SE4

The front door opens into a spacious entrance hall with a storage cupboard and under stairs storage. On the right is a bright, dual aspect living room and to the left is a large kitchen/diner with lots of storage and worktop space. The kitchen opens into a bright, brick built conservatory and off this is a w.c. On the first floor are three double bedrooms, all with fitted wardrobes and these are served by a three piece bathroom suite with a shower over the bath.

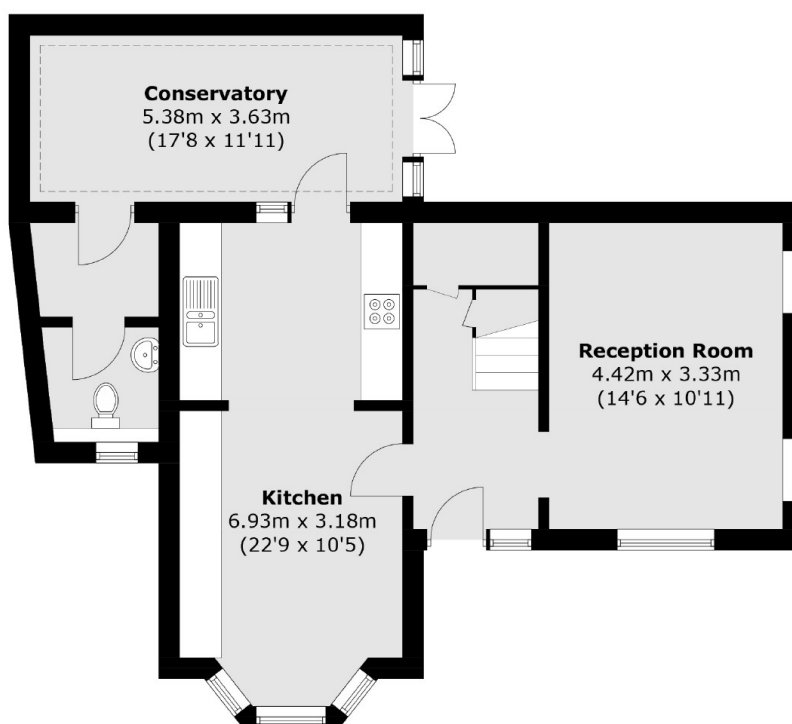
To the side of the property and accessed from the conservatory is a the large private mature garden which allows plenty of potential to extend into STPP.



Ewhurst Road, London, SE4



First Floor



Ground Floor

Total area (approx.): 111.2 sq. m (1,196.9 sq. ft)