



Sydenham Hill, SE26

£4,500 Per calendar month

Dexters



Sydenham Hill, SE26

Located within a private parkland estate and set within a beautiful Victorian mansion is this three bedroom split level apartment refurbished to the highest of standards and further benefitting from a private terrace, an on site gym, sauna, steam room and spa.

Measuring just under 1250 sq ft this property has been refurbished to the highest of standards. It has a large living / reception room, three double bedrooms, two bathrooms and a private terrace. Beltwood Park residences further benefits from a private spa, sauna, steam room and gym as well as secure off street parking.

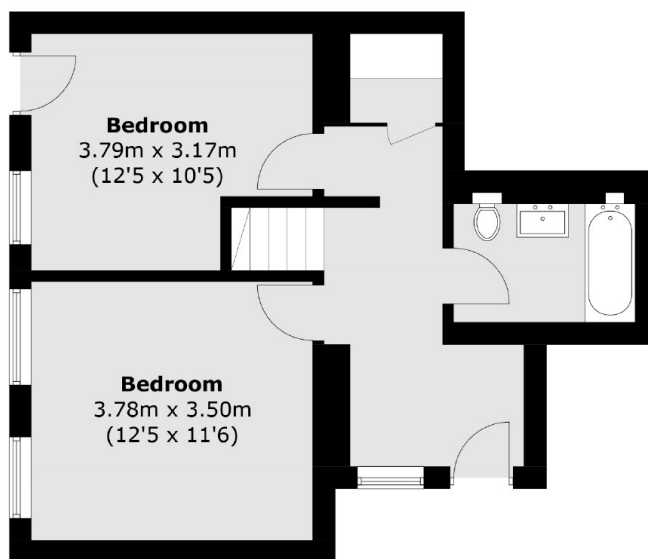
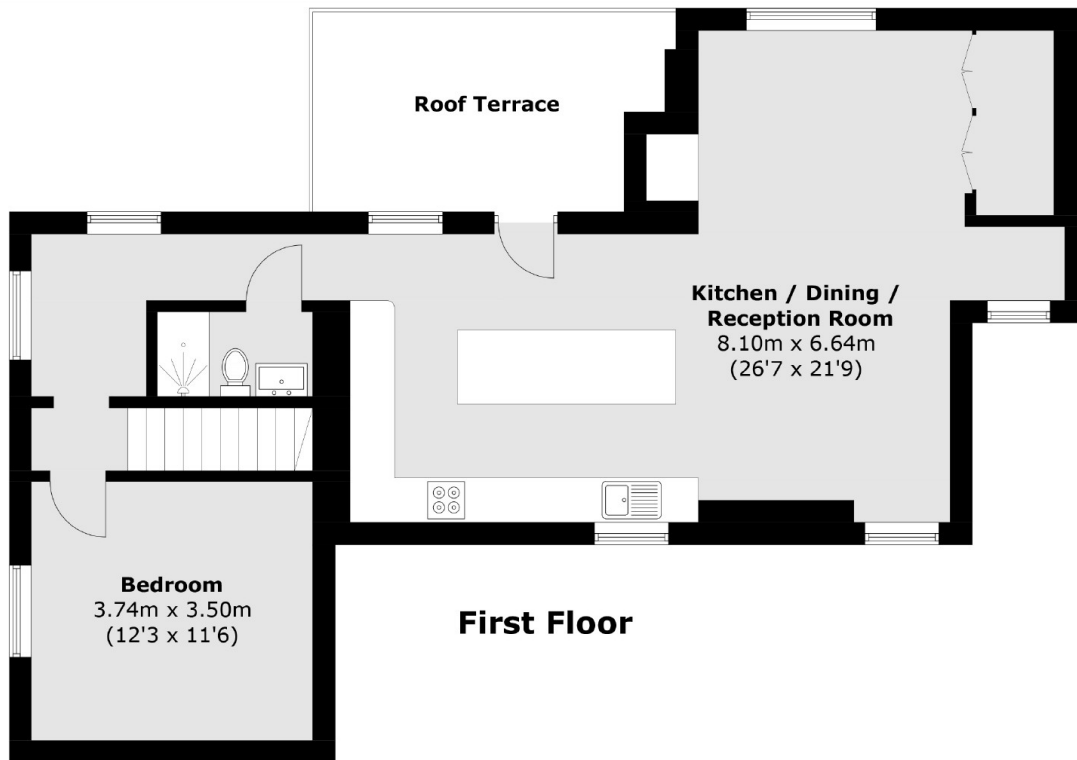
Beltwood Park Residences is a secure private development located conveniently for Duwich Woods, Sydenham Hill and Crystal Palace. The nearest stations would be Sydenham Hill and West Dulwich which offer frequent services into London Victoria.

Features

- Three Double Bedrooms
- Two Bathrooms
- Private Terrace
- Communal Spa & Sauna
- Communal Steam Room
- Communal Gym



Sydenham Hill, London, SE26



Ground Floor

Total area (approx.): 118.5 sq. m (1,275.4 sq. ft)
Roof Terrace area (approx.): 12.1 sq. m (130.2 sq. ft)