



Westwood Park, SE23  
£900,000

**Dexters**



## Westwood Park, SE23

A five bedroom, two bathroom, semi-detached house measuring in excess of 1,500 sq ft with far reaching views across London. There is a large living room, an open plan kitchen/diner and a generous south/east facing garden.

The front path leads up to the front door, there is a porch that then opens into the entrance hall. On the left is a large living room with a bay window and feature fireplace and to the rear is an open plan kitchen/diner. The modern kitchen has white gloss units with contrasting worktops and has an island unit and a range of fitted appliances. The first floor has two double bedrooms with fitted wardrobes and a third bedroom which have use of a family bathroom. The loft has been converted to create two further double bedrooms and a modern four piece bathroom suite.

To the rear of the property is a large south/east facing garden which is tiered with a patio area and lawned area.

Westwood Park is a quiet residential road located between Dulwich, Forest Hill and Honor Oak Park. It has convenient access to both Forest Hill and Honor Oak Park train station's along with a number of Ofsted 'Outstanding' schools. The amenities of Forest Hill, Honor Oak and Dulwich are all within close proximity.

### Features

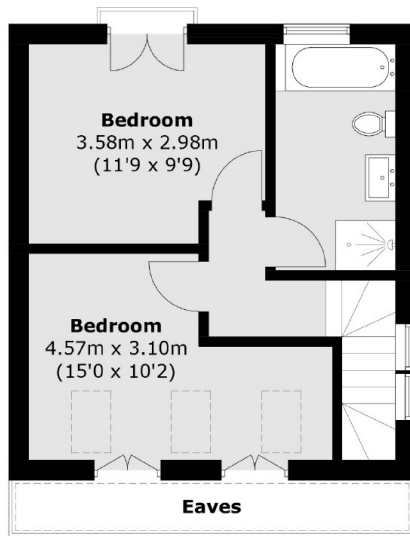
- Five Bedroom
- House
- Semi Detached
- In Excess of 1,500 Sq Ft
- Fantastic Views
- Open Plan Kitchen/Diner



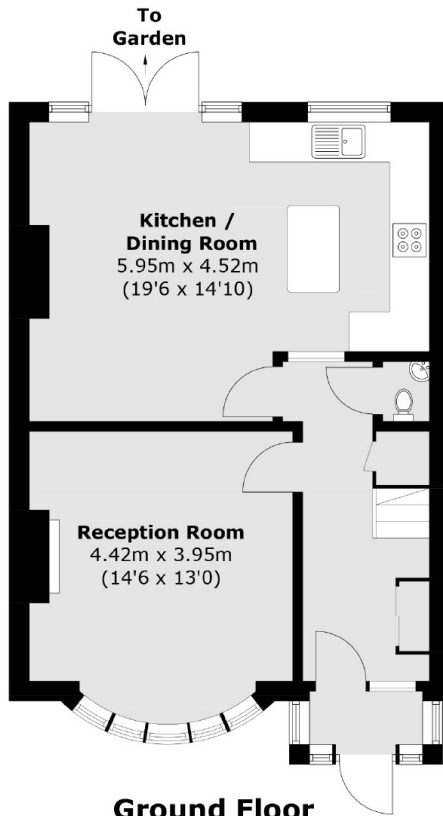
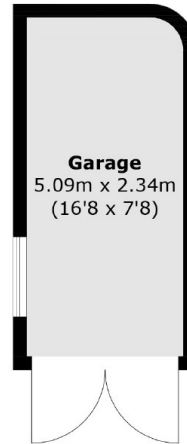




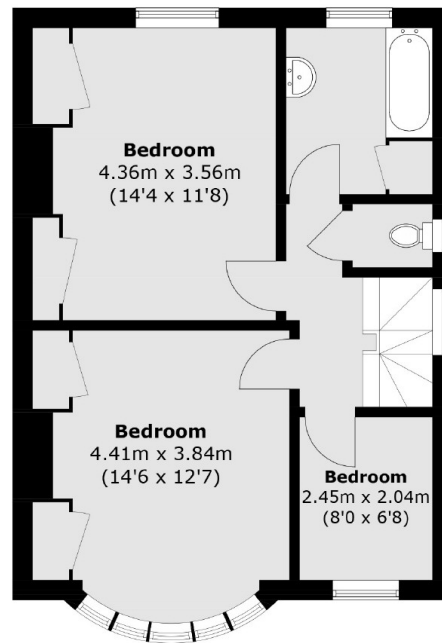
# Westwood Park, London, SE23



**Second Floor**



**Ground Floor**



**First Floor**

Total area (approx.): 139.6 sq. m (1,502.6 sq. ft)  
Garage : 11.9 sq. m (128.1 sq. ft)